



# California Department of Water Resources Integrated Regional Water Management Program

## East Stanislaus IRWM Region Acceptance Process

Prepared by:



April 2011

---

## **Table of Contents**

Chapter 1	Submitting Entity .....	1-1
Chapter 2	RWMP Composition .....	2-1
Chapter 3	Stakeholder Inclusiveness .....	3-1
3.1	Procedure, Processes and Structure to Promote Access to Information and Collaboration.....	3-3
Chapter 4	Public Involvement .....	4-1
4.1	Public Involvement and Awareness .....	4-1
4.2	Public Input Process .....	4-1
Chapter 5	Governance.....	5-1
5.1	Organization.....	5-1
5.2	Decision Making.....	5-3
Chapter 6	Region.....	6-1
Chapter 7	Water Management History .....	7-1
Chapter 8	Inter-Regional Coordination .....	8-1

## **List of Tables**

Table 1-1:	Submitting Entity Contact Information .....	1-1
Table 2-1:	Member Agencies' Water Management Responsibilities .....	2-1
Table 3-1:	Stakeholder List.....	3-2
Table 3-2:	Other Identified Participants in IRWM Planning Effort .....	3-4
Table 4-1:	Submitting Entity Contact Information .....	4-2

## **List of Figures**

Figure 2-1:	ESRWMP Member Agencies .....	2-2
Figure 5-1:	East Stanislaus Region Governance Structure .....	5-3
Figure 6-1:	Boundaries of the East Stanislaus Region .....	6-1
Figure 6-2:	Cities Located in the East Stanislaus Region.....	6-4
Figure 6-3:	Disadvantaged Communities Located in the East Stanislaus Region .....	6-5
Figure 6-4:	Surface Water and Groundwater Features in and adjacent to the East Stanislaus Region.....	6-6
Figure 6-5:	100-Year Flood Plain Maps for Water Bodies within the East Stanislaus Region...	6-7

## **Appendices**

Appendix A -	East Stanislaus Regional Water Management Partnership Draft Memorandum of Understanding	
Appendix B -	Letters from ESRWMP Member Agencies	
Appendix C -	Public Meeting Materials	

---

## **List of Abbreviations**

AFY	Acre-feet per year
DAC	Disadvantaged Community
DWR	Department of Water Resources
ESIRWM	East Stanislaus Integration Regional Water Management
ESRWMP	East Stanislaus Regional Water Management Partnership
gpd	gallons per day
IRWM	Integrated Regional Water Management
mgd	million gallons per day
MID	Modesto Irrigation District
MOU	Memorandum of Understanding
PAC	Public Advisory Committee
RAP	Region Acceptance Process
SC	Steering Committee
TGBA	Turlock Groundwater Basin Association
TID	Turlock Irrigation District

## Chapter 1 Submitting Entity

This Region Acceptance Process (RAP) application is being submitted by the City of Modesto on behalf of the East Stanislaus Regional Water Management Partnership (ESRWMP), the official RWMG for the East Stanislaus Integrated Regional Water Management (ESIRWM) Planning Region.

As described in the Draft Memorandum of Understanding (MOU), scheduled to be signed by the Cities of Ceres, Hughson, Turlock, and Modesto by June 30, 2011 (included in Appendix A), the City of Modesto is acting as the lead agency and is given permission to submit the RAP application on behalf of the ESRWMP, in addition to grant applications or other related IRWM planning materials on behalf of the ESRWMP. Additionally, each city has prepared a letter giving the City of Modesto permission to submit the RAP application and stating they intend to adopt the IRWMP. These letters are included in Appendix B. The primary point of contact for the submitting entity is Jim Alves, Associate Civil Engineer in the Utility Planning and Projects Department of the City of Modesto; his contact information is provided in Table 1-1. The City of Modesto was chosen as the submitting entity as they are the largest city in the Region, responsible for all aspects of water management in its portion of the Region, and they have acted as the lead agency in previous regional planning (e.g. Wastewater Regionalization Study and the Regional Water Project).

**Table 1-1: Submitting Entity Contact Information**

Submitting Entity	City of Modesto
Point of Contact	Jim Alves
Mailing Address	1010 Tenth Street, Suite 4600 Modesto, CA 95353
Phone Number	209-571-5557
Fax Number	209-522-1780
Email Address	jalves@modestogov.com

## Chapter 2 RWMG Composition

The official RWMG for the East Stanislaus IRWM Region is the East Stanislaus Regional Water Management Partnership (ESRWMP), comprised of four member agencies: the Cities of Modesto, Ceres, Turlock, and Hughson. This Region and its associated RWMG are new and were recently developed, beginning in July 2010, to foster regional communication and cooperation and to cooperatively resolve potential water supply conflicts in the Region. Although there are other local agencies within the region that have statutory authority over water supply or water management and have been invited to participate in the East Stanislaus IRWM planning process, some have shown interest while other agencies have chosen not to participate as part of the RWMG at this time or are still considering their level of participation. They will continue to be encouraged to participate in the Public Advisory Committee (PAC).

As it is currently structured, the RWMG member agencies cover various responsibilities within the Region. These are summarized in Table 2-1.

**Table 2-1: Member Agencies' Water Management Responsibilities**

Member Agency	Water Management Responsibility				
	Water Supply & Quality	Wastewater	Recycled Water	Stormwater / Flood	Watershed / Habitat
City of Modesto	✓	✓	✓	✓	✓
City of Ceres	✓	✓	✓	✓	✓
City of Turlock	✓	✓	✓	✓	✓
City of Hughson	✓	✓	✓	✓	✓

Each of the four cities is located within the East Stanislaus regional boundaries and manages multiple diverse aspects of water resources throughout the East Stanislaus Region. Further, each of the four cities is granted statutory authority to manage and deliver water within their purview under California Water Code Section 1460. The Cities' associated boundaries are shown in Figure 2-1.

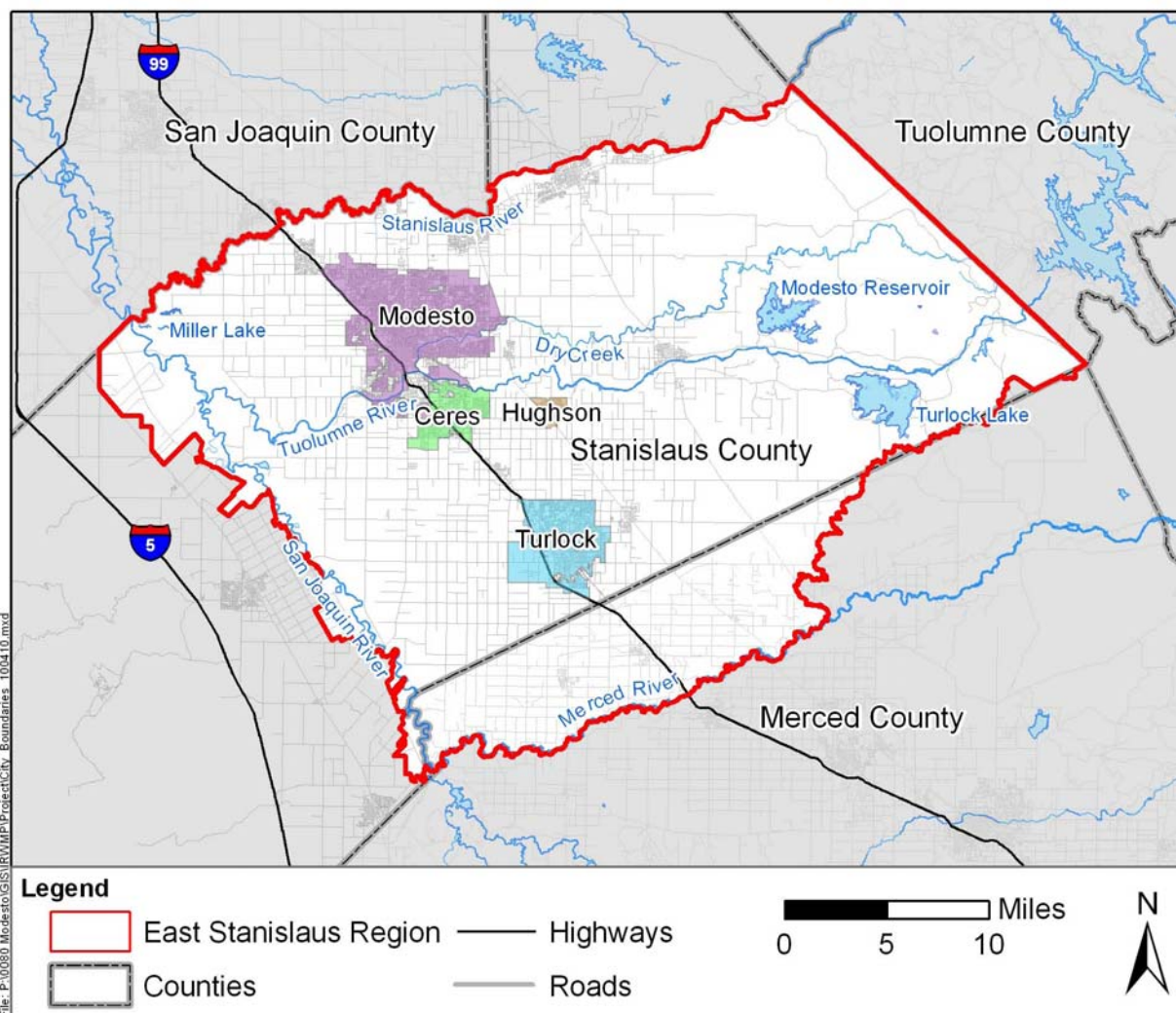
The City of Modesto provides drinking water, wastewater services, and storm drain and sewer maintenance to the city and surrounding communities. The City of Modesto supplies water to the City of Waterford and the communities of Salida, Empire, Hickman, Del Rio, parts of the City of Turlock, a northern part of the City of Ceres as well as other unincorporated County areas contiguous to the City of Modesto. In addition to groundwater supply, the City of Modesto also receives treated surface water supply through a long-term agreement with Modesto Irrigation District (MID) from Modesto Reservoir which is operated by MID. The City of Modesto operates 114 groundwater wells throughout its service areas. Modesto also operates two wastewater treatment facilities; the Sutter Avenue Primary Treatment Plant and the Jennings Road Water Quality Control Plant which was recently upgraded to provide tertiary treatment. There is potential for the City of Modesto to provide recycled water to users in the future; a feasibility study is currently underway by Del Puerto Irrigation District to further explore this option and identify new facilities that would be required for recycled water delivery and use. The Cities of Turlock and Ceres are also involved in this effort, referred to as the North Valley Regional Recycled Water Program (NVRWP). Up to 46,900 acre-feet per year of recycled water produced by the Cities of Modesto, Ceres, and Turlock would be delivered to Del Puerto Irrigation District for agricultural irrigation.

Groundwater is the only source of potable water for the City of Ceres; the Ceres Water Services Division maintains the City's ten groundwater wells, two reservoirs, providing a total of 4 million gallons (MG) of

storage, and associated pipelines and pump stations. Ceres also manages storm drainage services to handle internal storm runoff and flood protection. The City of Ceres Sanitary Services Division manages, operates and maintains the Ceres Wastewater Treatment Plant and wastewater collection system. One million gallons per day (mgd) of wastewater from the City of Ceres is also sent to and treated at the City of Turlock’s Regional Water Quality Control Facility. Wastewater from Turlock’s residents and commercial and industrial dischargers, as well as wastewater from Denair and Keyes Community Service Districts, is also treated at the Turlock Regional Water Quality Control Facility.

The City of Turlock has provided users recycled water for irrigation, and 2 mgd of recycled water is provided to the Turlock Irrigation District (TID) for cooling purposes at its Walnut Energy Center. The Utility Maintenance Division of the City of Turlock provides safe and effective water, wastewater and storm distribution system and related services to its service area. Similarly, the City of Hughson manages the water, stormwater and wastewater systems within its city boundaries.

**Figure 2-1: ESRWMP Member Agencies**



As previously described in Chapter 1, the ESRWMP member agencies have drafted and reviewed an MOU committing to the purpose of coordinating water resources planning efforts and developing an integrated regional water management plan (IRWMP) for the East Stanislaus Region. The MOU outlines

the overall goals of the IRWM planning effort, the roles each city has as ESRWMP member agencies as well as indicating that they are expected to adopt the completed IRWMP. The MOU is currently being reviewed by the Cities' legal counsels and will be revised as necessary and signed by approximately June 30, 2011.

Although the ESRWMP member agencies are acting as the lead voice for the development and implementation of the IRWM Plan, stakeholders will participate in a variety of ways throughout the planning process. The forum for IRWM planning in the East Stanislaus region is through the creation of the ESRWMP, Steering Committee (SC), and Public Advisory Committee (PAC), with the PAC representing all other stakeholders. During development and implementation of the IRWM Plan, the ESRWMP will conduct meetings for themselves, the SC and the PAC. The general public will be able to attend all meetings to provide input and ask questions; this governance organization is further discussed in Section 4.1.

The ESRWMP will act as the lead voice in the IRWM planning and implementation process, as there are multiple agencies, stakeholders, and members of the public involved in the process. The ESRWMP will facilitate communication, cooperation and education between member agencies; facilitate implementation of the IRWMP and overall planning process; provide oversight to both the SC and PAC; finalize the prioritization methodologies based on Committees' input; screen and rank the projects; and ultimately determine the methodology for inclusion of projects in grant applications. Agencies, entities and the public at large have been, and will continue to be, invited to participate in the IRWM planning process, and consensus will be sought when the need for a decision arises. However, ultimately, the ESRWMP will have final decision-making authority in the rare case the other committees cannot come to consensus.

The SC will act as program managers for the region, ensuring that the planning process stays on track, and managing budget, schedule, and contracts with outside vendors. The PAC will be a stakeholder committee that provides input and recommendations to the ESRWMP and SC. The PAC is currently being formed and is the first tier of decision making, providing recommendations for developing project prioritization methodologies to the SC, helping to screen and rank projects, contributing to the methodology for inclusion of projects in grant applications, providing direct public communication and seeking public feedback and input, and conducting other actions as directed. Generally, anyone who wants to participate in the IRWM planning and implementation process can, at a minimum, participate in the PAC. The roles of the member agencies within the RWMG are further described in Chapter 5, Governance .

As previously stated, the ESRWMP members will adopt the IRWM Plan once it is finalized, and any stakeholder entity that chooses to accept or adopt the Plan to demonstrate support and commitment to implementation may also do so at that time.

## Chapter 3 Stakeholder Inclusiveness

The East Stanislaus Region understands the importance of engaging stakeholders and the general public throughout the water management planning and IRWM process. In order to engage stakeholders, including disadvantaged and tribal communities, the East Stanislaus Region conducts various meetings that are open to the public. Disadvantaged communities (DACs) were identified through a Geographic Information System (GIS) analysis as discussed in Chapter 6, Region. No tribal communities within the Region were identified. It is possible that as more public meetings are conducted and additional outreach to stakeholders takes place, that tribal communities within the Region may be identified.

As described in greater detail in, Chapter 5, Governance , the East Stanislaus RWMG conducted an initial public workshop on March 16, 2011 to announce the creation of the East Stanislaus Region and the IRWM planning process within the Region. At this meeting, contact information of all meeting attendees was compiled and a stakeholder list was created. The stakeholder contact list is continually updated as new persons, entities, and organizations express interest in the IRWM planning process. The most recent version of this stakeholder list is shown in Table 3-1 (note that not all stakeholders listed attended the March 16<sup>th</sup> public workshop). Materials from the meeting including the PowerPoint presentation, handouts, and sign-in sheets are included in Appendix C.

In addition to providing general information about the IRWM planning process at the initial public meeting, a call for applications for participation in the Public Advisory Committee (PAC) was conducted in which stakeholders who wanted to become a member of the PAC could voice their interest in doing so, understanding that they will attend regularly scheduled meetings and are committing to a designated person or alternate in attendance. The PAC serves as one venue for conveying stakeholders input, comments, interests and ideas to the planning process. Unfortunately, no one signed up for the PAC at the March 16<sup>th</sup> initial public meeting. At the next public workshop, the PAC will be discussed and members solicited again at that time. In the interim, direct outreach will be conducted to other local agencies and organizations to encourage stakeholders to participate in the PAC.



Table 3-1: Stakeholder List

Category / Stakeholder	Contact	Title	Phone No.	Email	Address
<b>Regional Water Management Group Members</b>					
City of Modesto	Nick Pinhey	Direct of Utility Planning & Projects	209-577-5213	<a href="mailto:npinhey@modestogov.com">npinhey@modestogov.com</a>	Utility Planning and Projects Dept, 1010 Tenth St, Ste 4600, PO Box 642 Modesto, CA 95353
City of Modesto	Jack Bond	Senior Civil Engineer	209-577-5424	<a href="mailto:jbond@modestogov.com">jbond@modestogov.com</a>	Utility Planning and Projects Dept, 1010 Tenth St, Ste 4600, PO Box 642 Modesto, CA 95353
City of Modesto	Jim Alves	Associate Civil Engineer	209-571-5557	<a href="mailto:jalves@modestogov.com">jalves@modestogov.com</a>	Public Works Department, 1010 Tenth St, Ste 4600, PO Box 642 Modesto, CA 95353
City of Turlock	Dan Madden	Municipal Services Director	209-668-5599 x4401	<a href="mailto:dmadden@turlock.ca.us">dmadden@turlock.ca.us</a>	156 S Broadway, Ste 270, Turlock, CA 95380
City of Turlock	Mike Cooke	Regulatory Affairs Manager	209-668-5599 x4418	<a href="mailto:mcooke@turlock.ca.us">mcooke@turlock.ca.us</a>	157 S Broadway, Ste 270, Turlock, CA 95380
City of Turlock	Toni Cordell	Staff Services Technician	209-668-4474 x4474	<a href="mailto:tcordell@turlock.ca.us">tcordell@turlock.ca.us</a>	156 S Broadway, Ste 270, Turlock, CA 95380
City of Ceres	Mike Brinton	Public Works Director	209-538-5759	<a href="mailto:Michael.Brinton@ci.ceres.ca.us">Michael.Brinton@ci.ceres.ca.us</a>	2220 Magnolia St. Ceres, CA 95307
City of Ceres	Sheila Cumberland	Interim City Manager			2720 Second St. Ceres, CA 95307
City of Hughson	Dominique Spinale	Management Analyst	209-883-0811 x38	<a href="mailto:dspinale@hughson.org">dspinale@hughson.org</a>	7018 Pine St. PO Box 9, Hughson, CA 95326
City of Hughson	Thom Clark	Director of Planning/Building	209-883-0811 x33	<a href="mailto:tclark@hughson.org">tclark@hughson.org</a>	7019 Pine St. PO Box 9, Hughson, CA 95326
<b>Cities &amp; Communities</b>					
City of Patterson	Mike Willett	Public Works Director	209-895-8065	<a href="mailto:mwillett@ci.patterson.ca.us">mwillett@ci.patterson.ca.us</a>	1 Plaza, P.O. Box 667, Patterson, CA 95365
City of Newman	Garner Reynolds	Public Works Director	209-862-4448	<a href="mailto:greynolds@cityofnewman.com">greynolds@cityofnewman.com</a>	1162 Main St. PO Box 787, Newman, CA 95360
City of Riverbank	J.D. Hightower	Development Services Director	209-863-7124	<a href="mailto:jhightower@riverbank.org">jhightower@riverbank.org</a>	6707 Third St. Riverbank, CA 95367
City of Waterford	Lori Martin	City Clerk	209-874-2328	<a href="mailto:publicworks@cityofwaterford.org">publicworks@cityofwaterford.org</a>	312 E St, P.O. Box 199, Waterford, CA 95386
City of Waterford	Tony Marshall	Waterford City Engineer (MCR Engineering)	209-239-6229		1242 Dupont Circle, Manteca, CA 95336
City of Oakdale	Joe Leach	Public Works Director	209-845-3615	<a href="mailto:jleach@ci.oakdale.ca.us">jleach@ci.oakdale.ca.us</a>	455 South Fifth Ave, Oakdale, CA 95361
Community of Denair	Gaylon Wade	General Manager	209-634-4986	<a href="mailto:gwade@charterinternet.com">gwade@charterinternet.com</a>	P.O. Box 217, Denair, CA 95316
<b>Disadvantaged Communities</b>					
Community of Hickman					
Community of Empire					
Community of Riverdale					
Community of Keyes	Mike Jones	Utility Foreman	209-668-8341	<a href="mailto:kcsdmj@charterinternet.com">kcsdmj@charterinternet.com</a>	P.O. Box 699, Keyes, CA 95328
<b>Irrigation and Water Districts</b>					
Turlock Irrigation District	Bob Nees	Resources	209-883-8300	<a href="mailto:bnées@tid.org">bnées@tid.org</a>	333 East Canal Dr. PO Box 949, Turlock, CA 95381
Turlock Irrigation District	Debbie Liebersbach	Water Planning Department Manager	209-883-8428	<a href="mailto:dcliebersbach@tid.org">dcliebersbach@tid.org</a>	PO Box 949, Turlock, CA 95381
Modesto Irrigation District	Walt Ward	Assistant GM - Water Operations	209-526-7566	<a href="mailto:walterw@mid.org">walterw@mid.org</a>	1231 Eleventh St. Modesto, CA 95354 or PO Box 4060, Modesto, CA 95352
Eastside Irrigation District	Al Rossini		209-874-3739	<a href="mailto:ewd@ibmj.com">ewd@ibmj.com</a> (generic)	P.O Box 280, Denair, CA 95316
Oakdale Irrigation District	Steve Knell	General Manager	209-847-0341 x207	<a href="mailto:srknell@oakdaleirrigation.com">srknell@oakdaleirrigation.com</a>	1205 East F Street, Oakdale, CA 95361
Merced Irrigation District	Tom Stephens	Water Resources Specialist	209-722-5761	<a href="mailto:tstephens@mercedid.org">tstephens@mercedid.org</a>	744 W 20th St. Merced, CA 95340
Ballico-Cortez Water District	Victor Yamamoto		209-634-1279	<a href="mailto:vcyam@aol.com">vcyam@aol.com</a>	12724 Sunny Acres Avenue, Turlock, CA 95380
Delhi Water District	Stephany Perry		209-632-8777	<a href="mailto:dcwd@bigvalley.net">dcwd@bigvalley.net</a>	P.O. Box 639, Delhi, CA 95315
Hilmar Water District	Dale Wickstrom	Manager	209-632-3522	<a href="mailto:dale@hilmarcwd.org">dale@hilmarcwd.org</a>	P.O. Box 1060, Hilmar, CA 95324
<b>Stanislaus County Municipal Advisory Councils</b>					
Stanislaus County Chief Executive Office	Kristi Amaral				1010 10th St., Suite 6800, Modesto, CA 95354
Denair MAC	Dennis Findley		209-669-8560		
Knights Ferry MAC	Shavon Haskell		209-881-3500		
Empire MAC	Kathaleen Allen		209-524-7578		
Salida MAC	Thomas Reeves		209-545-2949		
Hickman MAC	Rick Walke		209-874-5404		
South Modesto MAC	Silvia Camarillo		209-576-1318		
Keyes MAC	Davie Landers		209-664-1431		
Valley Home MAC					
<b>Counties</b>					
Stanislaus County	John Aud	Sr. Environmental Health Specialist	209-526-6754	<a href="mailto:jaud@envres.org">jaud@envres.org</a>	3800 Cornucopia Way, Suite C, Modesto, CA 95358
Stanislaus County	Sonya Harrigfeld	Director of Environmental Resources	209-525-6770	<a href="mailto:harrigfeld@envres.org">harrigfeld@envres.org</a>	3800 Cornucopia Way, Suite C, Modesto, CA 95358
Merced County	Ron Rowe	Environmental Health Specialist	209-381-1097	<a href="mailto:rowe@co.merced.ca.us">rowe@co.merced.ca.us</a>	2222 M St. Merced, CA 95340
<b>Others</b>					
Friends of the Tuolumne	Alison Boucher			<a href="mailto:aboucher@bedbroadband.com">aboucher@bedbroadband.com</a>	1900 NE 3rd St, suite 106, PMB 314, Bend, OR 97701
Gomes Lake (Stanislaus County)	Matt Machado	Public Works Director	209-525-6550	<a href="mailto:machadom@stancounty.com">machadom@stancounty.com</a>	1716 Morgan Rd, Modesto CA 95358
Tuolumne River Trust					829 Thirteenth ST. Modesto, CA 95354
Turlock Journal	Alex Cantatore	Staff Reporter	209-634-9141	<a href="mailto:acantatore@turlockjournal.com">acantatore@turlockjournal.com</a>	138 S Center St. Turlock, CA 95380
Citizen	Jesse Roseman		209-220-6927	<a href="mailto:jessetroseman@gmail.com">jessetroseman@gmail.com</a>	1201 Lexington Dr. Modesto, CA 95350
<b>Neighboring IRWMP Regions</b>					
Merced IRWMP	Hicham Eltal	MAGPI Chairman	209-722-5761	<a href="mailto:heltal@mercedid.org">heltal@mercedid.org</a>	PO Box 2288, Merced, CA 95344
Westside-San Joaquin IRWMP					
Tuolumne-Stanislaus IRWMP					
Eastern San Joaquin IRWMP Authority	Ara Azhderian	Water Policy Administrator	209-826-9696	<a href="mailto:ara.azhderian@sldma.org">ara.azhderian@sldma.org</a>	842 Sixth Street, Los Banos, California 93635

### 3.1 Procedure, Processes and Structure to Promote Access to Information and Collaboration

The public outreach process for the East Stanislaus Region provides stakeholders with two options for involvement: (1) general public participation at the ESRWMP, Steering Committee, and PAC meetings, and (2) involvement through participation in the PAC. This format ensures both a balanced and diverse collection of stakeholders due to the flexibility in the level of commitment and involvement for those interested.

The following methods are used to not only disseminate information to stakeholders, disadvantaged and tribal communities and the general public, but also can be used by them to provide input, ask questions, and participate in the planning process and IRWM Plan development process:

- ESRWMP, Steering Committee, and PAC meetings
- East Stanislaus IRWM planning website (yet to be developed)
- Handouts, newsletters, advertisements

The website will especially allow for an even and effective exchange of information between the ESRWMP and the stakeholders. The ESRWMP recognizes the significance of stakeholder input and therefore provides these various avenues for participation. Public input is further described in greater detail in Chapter 4, Public Involvement.

As previously noted, there are other local agencies within the Region with statutory authority over water supply and/or water management; these agencies have been invited to participate in the IRWM planning process, but some have declined at this time. Many of the local agencies have a history working with the member agencies. For example, the City of Modesto and the Modesto Irrigation District (MID) have a water supply relationship (wholesaler-retailer) and have prepared a joint-Urban Water Management Plan (UWMP) due to the overlap in water resources management and shared water resources. In the early 1990s, the City of Modesto, MID and the Del Este Water Company formed a partnership to use a portion of MID's surface water supplies for municipal uses, resulting in the Modesto Domestic Water Project (MDWP), a 30 mgd surface water treatment plant, and storage and delivery facilities, constructed in 1995. Similarly, the Cities of Turlock, Modesto, Ceres and Hughson, have been negotiating with Turlock Irrigation District (TID) to receive treated water from the Tuolumne River to supplement current potable water supplies. The Cities entered into an agreement with TID to participate in design of a TID Surface Water Supply Project (SWSP) to be located east of Modesto on the south side of the Tuolumne River.

The ESRWMP cooperates with these other agencies and districts through various planning processes and implementation of projects. Other participants that will be involved in the IRWM planning process within the East Stanislaus Region are summarized in Table 3-2. Some of the stakeholders that are currently not participating have been contacted directly and it is expected some will begin to participate as the process progresses. The Stakeholder Contact List includes contact information for most of the identified stakeholders, so meeting updates, handouts, and announcements will be mailed or sent electronically to these organizations to keep stakeholders informed and up to speed on ways to participate in the East Stanislaus IRWM planning process.

Table 3-2: Other Identified Participants in IRWM Planning Effort

Category	Participant Name	Working Relationship
Wastewater	Empire Sanitary District	Stakeholder (not currently participating)
	Salida Sanitary Sewer District	Stakeholder (not currently participating)
Irrigation / Water Districts	Modesto Irrigation District	Stakeholder (not currently participating)
	Turlock Irrigation District	Stakeholder
	Eastside Irrigation District	Stakeholder (not currently participating)
	Oakdale Irrigation District	Stakeholder
	Merced Irrigation District	Stakeholder (not currently participating)
	Ballico-Cortez Water District	Stakeholder (not currently participating)
	Delhi Water District	Stakeholder (not currently participating)
	Hilmar Water District	Stakeholder (not currently participating)
	Cities	Riverbank
Waterford		Stakeholder (not currently participating)
Oakdale		Stakeholder
Other Communities	Grayson	Stakeholder (not currently participating)
	Denair	Stakeholder (not currently participating)
	Del Rio	Stakeholder (not currently participating)
Electrical Corporation	Pacific Gas & Electric	Stakeholder (not currently participating)
Counties	Merced	Stakeholder (not currently participating)
	Stanislaus	Stakeholder (not currently participating)
State and Federal Agencies	Turlock State Park	Stakeholder (not currently participating)
Disadvantaged Communities	Keyes	Stakeholder (not currently participating)
	Hickman	Stakeholder (not currently participating)
	Empire	Stakeholder (not currently participating)
	Riverdale	Stakeholder (not currently participating)
Environmental Groups	Friends of Tuolumne	Stakeholder (not currently participating)
	Tuolumne River Trust	Stakeholder (not currently participating)

Note: The ESRWMP will be contacting these stakeholder organizations directly to solicit participation in the PAC

## Chapter 4 Public Involvement

The formation of the East Stanislaus RWMG and conception of the Region were announced to the public through a workshop on March 16, 2011. This workshop identified stakeholders and solicited for participants, agencies, and other entities that wanted to receive meeting announcements and updates. Contact information was collected, and an email distribution list was developed. This list will continue to be updated with new additions as interest in involvement increases. Additional public involvement will continue throughout the development of the East Stanislaus IRWMP and through implementation of the Plan, as described in the following sections.

### 4.1 Public Involvement and Awareness

In order to make the public both aware of and a part of the regional water management planning and IRWM planning efforts within the Region, various methods will be applied to reach a varied audience. Public workshops will be conducted to introduce the IRWM process and, as needed, to update the public at key junctures in the regional water management process and to allow for public input. As discussed in the governance structure section (Chapter 5) the ESRWMP will conduct meetings for themselves, the Steering Committee, and the Public Advisory Committee. The public will be allowed and encouraged to attend Steering Committee and Public Advisory Committee meetings and provide comments on both agendized and non-agendized items. The public may also attend open sessions of ESRWMP meetings to provide comments on agendized items only (similar to the way City Council meetings are conducted). The Steering Committee provides notice of all meeting types by posting the agenda, notices, and minutes on the East Stanislaus IRWM planning website (yet to be developed), as well as a posting on a public announcement board and direct mailings to a mailing list of interested stakeholders. The Steering Committee ensures the meeting notices are posted with ample time for the public to participate in the meetings. Additionally, as documents are developed and public review is solicited, copies are placed in public libraries for public access and on the Region's website.

Other mechanisms used to ensure public awareness of the East Stanislaus IRWM process include the development and distribution of brochures, fact sheets, IRWM process status newsletters, and brief updates. Hard copies are available at meetings and electronic copies are sent to the email distribution list and posted on the Region's website, which the East Stanislaus Region plans on developing. The website will allow the ESRWMP to disseminate information to a wide audience. The website will be updated on a bi-monthly basis, at a minimum, to maintain current meeting information and past project updates, press releases, meeting materials and other items of interest. The website domain will be hosted by an ESRWMP member agency and each ESRWMP member agency will have a link to the East Stanislaus IRWMP website on its respective agency-specific website. The website will also allow for stakeholders to enter comments and questions and provide contact information should they want to speak to an East Stanislaus Region representative. The website will act as a forum for the ESRWMP and stakeholders to exchange information throughout the IRWM planning process.

### 4.2 Public Input Process

There are multiple ways for public to gain access to the ESRWMP and IRWM process. The ESRWMP makes information available to the general public, including the status of the IRWM process and upcoming decisions to be made, through the handouts and website. If a member of the general public or a stakeholder has questions and comments, they are directed to a designated contact, Jim Alves at the City of Modesto; his contact information is provided in Table 4-1.

**Table 4-1: Submitting Entity Contact Information**

<b>Submitting Entity</b>	<b>City of Modesto</b>
Point of Contact	Jim Alves
Mailing Address	1010 Tenth Street, Suite 4600 Modesto, CA 95353
Phone Number	209-571-5557
Fax Number	209-522-1780
Email Address	jalves@modestogov.com

The public can provide input to the ESRWMP by attending the meetings, calling the provided contact, or emailing the contact with comments and questions. The designated contact discusses the questions and comments received with the Steering Committee, who takes the public input into consideration and responds to each call or email, as appropriate. If the ESRWMP receives public comment directly, the group evaluates the issues raised, and provides the comments/input to the Steering Committee to consider and respond to as appropriate.

In order to address the diversity of water management issues, geographical representation and stakeholder interests within the East Stanislaus Region, the ESRWMP has identified and directly invited key parties to participate in meetings and committees. Additionally, the ESRWMP plans to partner with local colleges, such as Modesto Junior College, California State University-Stanislaus, Humphreys College, and San Joaquin Valley College to encourage participation from younger participants, between the ages of 18 and 25. There is also the potential to combine participation in meetings with classes and/or class projects and studies. By performing specific outreach to local colleges, a wide range of ideas and energy can be accessed.

## Chapter 5 Governance

The Governance Structure described in this document provides the basis for relationships and procedures for governance of the ESIRWM region. The governance structure helps facilitate sustained regional water management and the associated IRWM process, both now and beyond the State grant IRWM funding programs. The East Stanislaus IRWM Region is inclusive and utilizes a collaborative, multi-stakeholder process that provides mechanisms to assist disadvantaged communities (DACs), address water management issues, and develop integrated multi-benefit regional solutions that incorporate environmental stewardship to implement future IRWM plans. Regardless of a person's or entity's ability to contribute financially to the East Stanislaus IRWM planning process, the ESRWMP engages them through public outreach as described in Chapter 4, Public Involvement.

### 5.1 Organization

The primary groups within the governance structure include the ESRWMP, the Steering Committee (SC), the Public Advisory Committee (PAC), and the general public. In the future, additional committees, either project-specific or task-specific, may be formed.

Members of the ESRWMP are a mix of elected officials, board of director members, and other representatives from the Cities of Modesto, Hughson, Ceres, and Turlock, the four ESRWMP member agencies. The members have drafted an MOU which is currently under review by each legal department and anticipated to be finalized and signed by June 30, 2011 (draft is included in Appendix A). Additional members may be added to the ESRWMP with approval of existing members and signing of the MOU. One representative from each MOU signatory will participate on the ESRWMP; each MOU signatory will also designate one alternate so that at every ESRWMP there will be a representative for each member. A more detailed description of the ESRWMP is included in Chapter 2. The ESRWMP will act as the lead voice in the IRWM planning and implementation process, as there are multiple agencies, stakeholders, and members of the public involved in the process. The ESRWMP also acts as the ultimate decision maker in the rare case that other committees cannot come to an agreement. The ESRWMP facilitates communication, cooperation and education between member agencies; facilitates implementation of the IRWMP and overall planning process; provides oversight to both the Steering Committee and Public Advisory Committee; finalizes the prioritization methodologies based on Committees' input; screens and ranks the projects; and ultimately determines the methodology for inclusion of projects in grant applications. ESRWMP meetings are held, as needed, at the discretion of the group and each member agency is represented by one person and one alternate (generally someone from within the agency's management structure with decision-making authority).

The Steering Committee, leads preparation and implementation of the IRWM Plan and future updates of the Plan. Representatives of the SC are generally those that are actively managing projects. Responsibilities of the SC include:

- Manage contracts, information/databases, reporting
- Manage the IRWM Plan development and implementation
- Provide guidance to consultants and manage contracts
- Manage budgets and schedule
- Coordinate with the Public Advisory Committee
- Present unresolved issues/work tasks to the Public Advisory Committee
- Generally manage the work
- Coordinate and implement the public outreach process
- Manage the East Stanislaus IRWMP website
- Ensure meetings are announced and posted in advance

- Coordinate distribution and posting of materials
- Manage the Public Advisory Committee meetings
- Convey Public Advisory Committee's recommendations to the ESRWMP

Similar to the ESRWMP, each agency or organization participating on the SC is represented by one person and one alternate. SC meetings are open to the general public and the SC directly engages the public, such as times when public input is solicited for on project/planning deliverables. During the public meetings, stakeholders can provide comments on agenda items and non-agenda items.

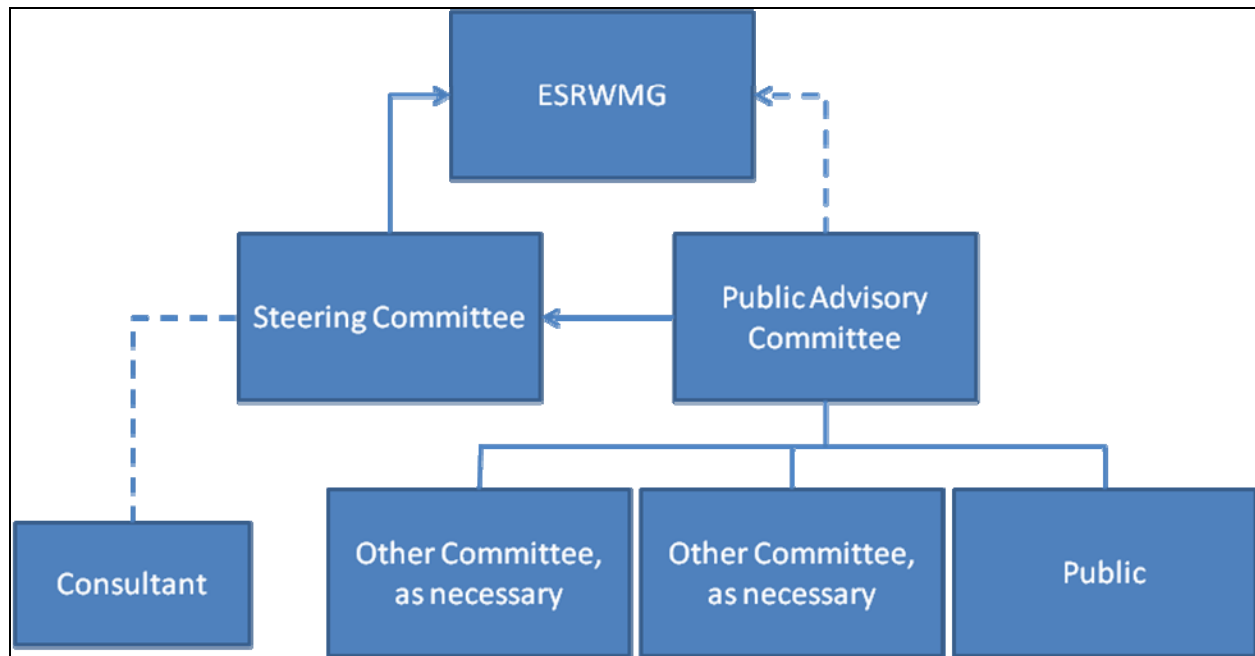
The Public Advisory Committee (PAC) is equivalent to a stakeholder committee that provides input and recommendations to the ESRWMP and SC. The PAC is the first tier of decision making and provides recommendations for developing project prioritization methodologies to the SC, helps screen and rank projects, contributes to methodology for inclusion of projects in grant applications, provides direct public communication and seeks public feedback and input, and conducts other actions as directed. Similar to the ESRWMP, each agency or organization participating on the PAC is represented by one person and one alternate.

Generally, anyone who wants to participate in the IRWM planning and implementation process can, at the least, participate in the PAC. An open call for applicants for the PAC was placed on March 16, 2011. Although there were not many meeting attendees at the East Stanislaus IRWM planning kickoff meeting, and no one volunteered to participate on the PAC, the ultimate goal is to have one representative and one alternate for each organization choosing to participate. When multiple applications are received for an organization, the SC will work with that organization to identify a single representative and an alternate for each organization. The PAC will receive direction and tasks to complete from the SC. The PAC will be comprised of non-governmental organizations (NGOs), environmental groups, community organizations, the County, Regional Board, disadvantaged communities and other special interest groups.

The general public will be able to attend any and all PAC meetings and provide comment on any item, whether it is included on the meeting agenda or not. Subcommittees to the PAC are formed, as necessary, to discuss specific water management activities/goals or to assume specific tasks as designated by the PAC. These subcommittees will have the same procedures and policies as the PAC.

The governance structure is organized as shown in Figure 5-1. The PAC conveys information to the ESRWMP through the SC for final decision, as needed. Members of the ESRWMP and SC can attend the PAC meetings as they wish.

Figure 5-1: East Stanislaus Region Governance Structure



Because the East Stanislaus Region is new, it is possible that new member organizations and/or forums may be added to the governance structure as the Region progresses and matures in the future. If an agency/entity/city would like to participate, the ESRWMP will meet and discuss the option. Organization representatives may be added to the ESRWMP and the SC, but it will require a vote among existing members. Similar to additions to the ESRWMP and SC, in the future, additional PAC members may be added, representing organizations not current participating on the PAC. There is the potential for future amendments to the MOU and addition of new organizations, with the approval of the existing member agencies. At a minimum, a new organization can always participate at the Steering Committee and/or Public Advisory Committee public meetings.

## 5.2 Decision Making

Decisions within the East Stanislaus Region are made using a consensus-based approach. The East Stanislaus Region is a new IRWM region and thus far, only IRWM-related decisions have been made. The ESRWMP has developed a protocol for other decision-making processes as described herein.

Any decision being made by the ESRWMP is done so based on a vote; each member representative in the ESRWMP gets one vote and all actions require a simple majority vote. Regional decision-making and management processes may be revised as the Region matures and the IRWM Plan is developed and implemented. Because the East Stanislaus Region is new, and is currently forming the Region itself and associated RWMG and committees, there has been little development of the IRWM Plan. Methods to establish IRWM Plan goals and objectives, prioritize projects, implement the IRWM Plan, and revise and update the Plan in the future have been discussed. Each is briefly summarized as follows:

- **Establish IRWM Plan Goals & Objectives.** Issues and Conflicts within the East Stanislaus Region have been identified. The SC will develop draft goals and objectives based on the identified Regional issues and conflicts. The PAC will have the opportunity to comment on the draft goals and objectives prior to RWMG finalizing them.
- **Prioritize Projects.** A scoring matrix will be developed in which the projects are ranked based on what degree they meet the IRWM Plan goals & objectives, in addition to any other parameters the



RWMG and committees decide upon (e.g. IRWM Program Preferences). The PAC will have a working meeting in which the members will score the projects to determine rankings. The SC and RWMG will perform the same exercise and an overall summary of results will be developed. The prioritization methodologies will be developed by the RWMG and SC with input from the PAC.

- **Implement the IRWM Plan.** The SC will be the lead in ensuring the IRWM Plan is implemented. Based on the MOU to be signed by each ESRWMP member agency, it is the personnel and financial resources of each member that will be necessary to develop and implement the IRWM Plan. The IRWM Plan will likely be implemented through the implementation of a series of short-term projects and long-term projects.
- **Revise and Update the IRWM plan.** It is envisioned that the ESIRWM Plan will be a planning tool which will require updates in response to emerging water management challenges and new project needs, and to ensure the Plan appropriately addresses the East Stanislaus Region's evolving needs. Similar to the implementation of the Plan, the SC will lead the effort of updating and revising the Plan as necessary, while the ESRWMP provides staff and financial support, as necessary.

The East Stanislaus Region has developed a specific, but flexible, method for decision making and a general framework for developing and implementing an IRWM Plan. The Region begins by identifying specific goals and objectives to meet the identified water management issues and conflicts within the Region. These goals and objectives form the basis for developing projects, prioritizing those projects, and completing an IRWM Plan. All decisions, as well as the development of the goals and objectives, identification and prioritization of projects, and development of the IRWM Plan, are done in a collaborative process. The decision making process and overall governance structure of the East Stanislaus Region facilitates the development of a single, collaborative water management portfolio prioritized based on meeting the regional goals and objectives.

As previously noted, conflicts and issues within the Region have been identified and discussed within the SC. These regional conflicts and issues include:

- Water supply reliability for both agricultural and urban users;
- Localized flooding and stormwater quality issues;
- Groundwater overdraft and contamination; and
- Management and protection of surface water resources as both water supplies and recreation.

In the past the cities and agencies in the area have worked together to come up with solutions to the issues facing the Region. For example, recent studies have shown the Turlock Groundwater Basin may be overdrafted requiring even closer collaboration and planning for the Basin. The Turlock Groundwater Basin Association (TGBA) member agencies including TID, Merced Irrigation District, the Cities of Ceres, Turlock, Modesto and Hughson, Hilmar and Delhi County Water Districts, the community services districts of Keyes, Denair, and Ballico, the Eastside and Ballico-Cortez water districts, and the Counties of Merced and Stanislaus, have been managing the groundwater basin together since the mid-1990's. Through this early coordination and identification of the overdraft conditions, the TGBA can conduct additional studies as necessary, update the GWMP, and develop projects that will help in the recovery of the groundwater basin. The agencies have a history of successfully working together and this will be reflected in the way in which the ESRWMP operates. By forming the ESRWMP on a voluntary basis, building commitment through developing shared goals and objectives, the effort will be sustained through the ongoing efforts to meet those goals and objectives.

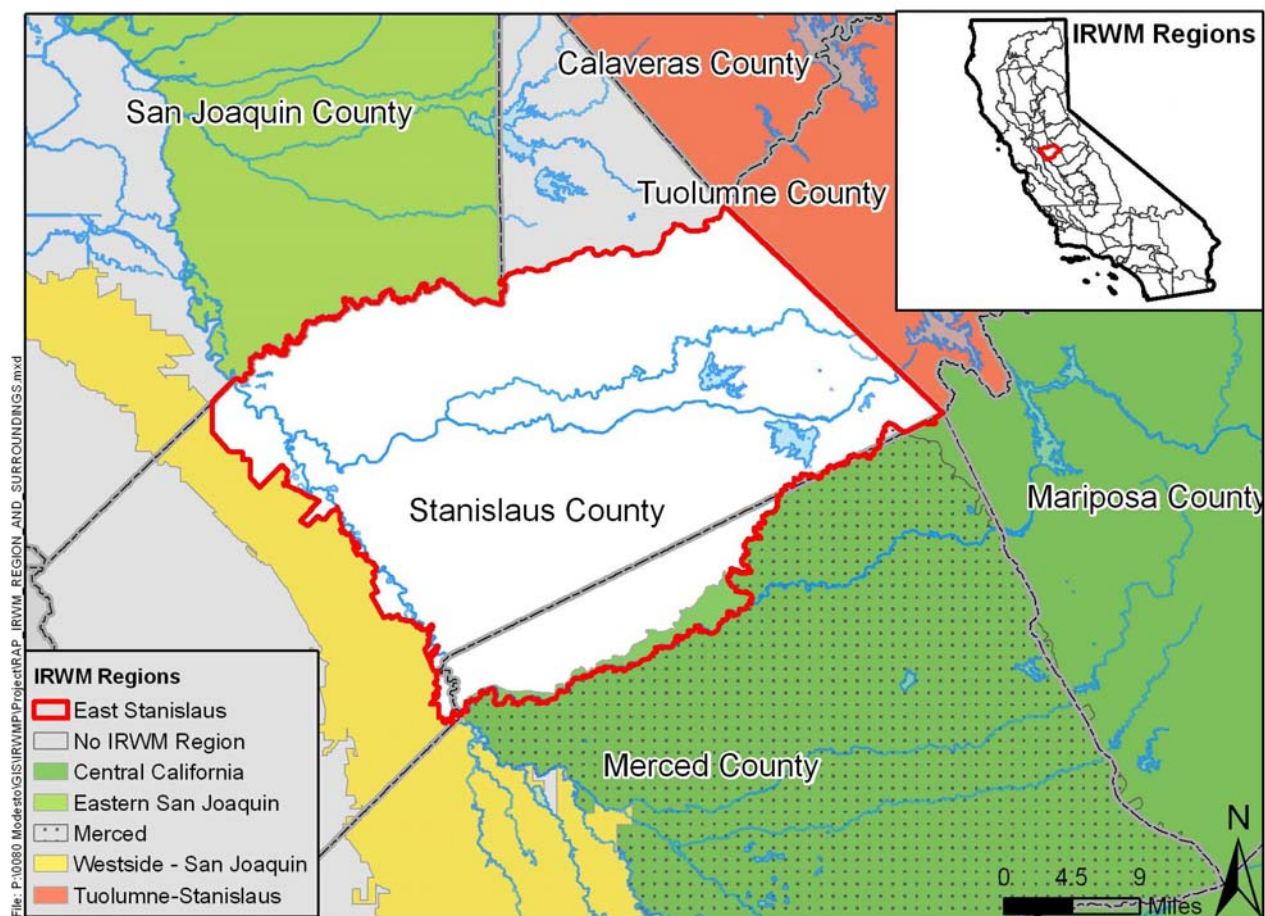
In addition to the ESRWMP, the Steering Committee, Public Advisory Committee, stakeholders, disadvantaged and tribal communities, the public at large, and adjacent IRWM regions also have a role in the East Stanislaus IRWM planning process. The ESRWMP has already begun coordinating with the adjacent Westside-San Joaquin Region through participation at its meetings. The ESRWMP has also engaged in discussions with the Merced Region on development of a Letter of Cooperation between the

two regions. However, because the East Stanislaus Region is relatively new, relationships with other IRWM regions have not yet been formed. The ESRWMP will ensure the neighboring IRWM regions are invited to participate in its planning process and will endeavor to identify inter-regional projects and programs, maximizing benefits and beneficiaries. The East Stanislaus Region will strive to be inclusive rather than exclusive, not only within the Region but with neighboring IRWM Regions. The ESRWMP recognizes the effectiveness of developing integrated projects and programs to create multi-benefit opportunities.

## Chapter 6 Region

The need for integrated regional planning in the East Stanislaus area, and therefore the need for an IRWM region, is most easily noted visually when viewing DWR's 2010 IRWM Regional Map. There is a void in IRWM coverage over the Cities of Modesto, Hughson, Turlock, and Ceres, in between the following five IRWM regions: Central California, Merced, Eastern San Joaquin, Tuolumne-Stanislaus and Westside-San Joaquin. Upon further analysis and discussion, the ESRWMP developed the East Stanislaus IRWM Region, as shown in Figure 6-1. The East Stanislaus IRWM Region has common boundaries with the Central California, Merced, Eastern San Joaquin, Tuolumne-Stanislaus and Westside-San Joaquin IRWM regions, with some variations due to agency boundaries and other factors. By using the boundaries of neighboring regions as a starting point, the proposed East Stanislaus Region covers an area of California that is in need of integrated regional water planning, and avoids major overlaps with neighboring regions.

**Figure 6-1: Boundaries of the East Stanislaus Region**



The boundaries of the East Stanislaus IRWM Region are as follows:

**North Boundary:** The north boundary of the East Stanislaus Region is defined by the Stanislaus River, Modesto Groundwater Basin and also a portion of the Stanislaus County border. The boundary also aligns with the Eastern San Joaquin IRWM boundary. Importance was placed on natural water boundaries and not solely political or jurisdictional boundaries. This resulted in the exclusion of north-eastern portion of Stanislaus County. This area was not chosen to be part of the region because it cannot be justified from a

watershed perspective. However, the communities in this area will be invited to participate in the East Stanislaus Region.

**South Boundary:** The Merced River Watershed, the Turlock Groundwater Basin, and the Turlock Irrigation District (TID) boundaries were used to delineate the southern boundary of the East Stanislaus IRWM Region. The southern boundary of the Region is located within the conditionally approved Central California IRWM Region, resulting in a minor overlap between the regions, and borders the conditionally approved Merced IRWM Region.

**Eastern Boundary:** The existing Tuolumne-Stanislaus IRWM Region boundary was used to form the eastern boundary of the East Stanislaus Region. By aligning the region boundary with the neighboring IRWM region's boundary, unnecessary confusion is avoided and inter-regional water management strategies can still be employed. The location of the eastern boundary also ensures that the Turlock and Modesto Groundwater Basins are located within the East Stanislaus Region.

**Western Boundary:** The San Joaquin River and the Westside-San Joaquin IRWM Region boundaries were used for the western boundary of the East Stanislaus region. The eastern boundary of both the Turlock and Modesto Groundwater Basins is the San Joaquin River; therefore the East Stanislaus Region fully encompasses these groundwater basins.

The East Stanislaus Region incorporates portions of both Stanislaus and Merced counties. The major cities located within the Region are the Cities of Modesto, Hughson, Turlock, and Ceres, which also comprise the ESRWMP, however, all cities within Stanislaus and Merced Counties, as well as neighboring counties, have been and will continue to be invited to participate in the IRWM process (Figure 6-2).

In addition to the Region including multiple local agencies, the East Stanislaus Region is also home to many disadvantaged communities, whose involvement in the IRWM process will be essential. Figure 6-3 identifies the DACs based on 2000 U.S. Census data and is defined as census block groups that have a median household income less than 80% of the statewide median household income (MHI). The California statewide MHI in according to the 2000 Census is \$47,493. Therefore 80% of the Statewide MHI is \$37,994. An analysis using ArcGIS was completed, identifying a number of census block groups existing in the East Stanislaus Region with an MHI less than \$37,994. A census block group is a cluster of census blocks, generally containing between 600 and 3,000 people. DACs within the Region are shown in Figure 6-3.

The East Stanislaus Region includes the 18<sup>th</sup> and 19<sup>th</sup> U.S. Congressional districts; the 17<sup>th</sup>, 25<sup>th</sup>, and 26<sup>th</sup> State Assembly Districts; and the 12<sup>th</sup> and 14<sup>th</sup> State Senate Districts. The entire East Stanislaus Region is located within Central Valley Regional Water Quality Control Board's jurisdiction.

The interior of the East Stanislaus includes Dry Creek, the Merced, San Joaquin, Stanislaus, and Tuolumne Rivers, as well as the Modesto Reservoir and Turlock Lake. The Region also includes a portion of the Delta-Mendota Groundwater Basin and the entire Turlock and Modesto Groundwater Basins, as shown in Figure 6-4. A majority of the San Joaquin River's 100-year flood plain (in this stretch of the San Joaquin River) is within the Region (Figure 6-5).

The East Stanislaus Region encompasses the service areas of multiple local agencies and maximizes opportunities for integrated water management activities. The four ESRWMP members have jurisdiction over water supply and quality, wastewater, recycled water, stormwater, and watershed/habitat in their respective service areas. The other entities that have water management responsibilities within the Region include other cities and communities, irrigation and water districts, and Stanislaus and Merced Counties.

The local agencies within the Region include:

- City of Riverbank
- City of Waterford
- City of Oakdale
- Community of Keyes
- Community of Denair
- Community of Del Rio
- Community of Grayson
- Community of Hickman
- Community of Empire
- Community of Hickman
- Community of Riverdale
- Turlock Irrigation District
- Modesto Irrigation District
- Eastside Irrigation District
- Oakdale Irrigation District
- Merced Irrigation District
- Ballico-Cortez Water District
- Delhi Water District
- Hilmar Water District
- Stanislaus County
- Merced County

Because critical groundwater basins, surface water supplies, habitat features and the agencies managing these resources are all located within the East Stanislaus Region, water supply reliability, water quality, environmental and flood protection will be able to be effectively integrated through the development of the East Stanislaus IRWMP. The water management portfolio will be strengthened and diversified.

Figure 6-2: Cities Located in the East Stanislaus Region

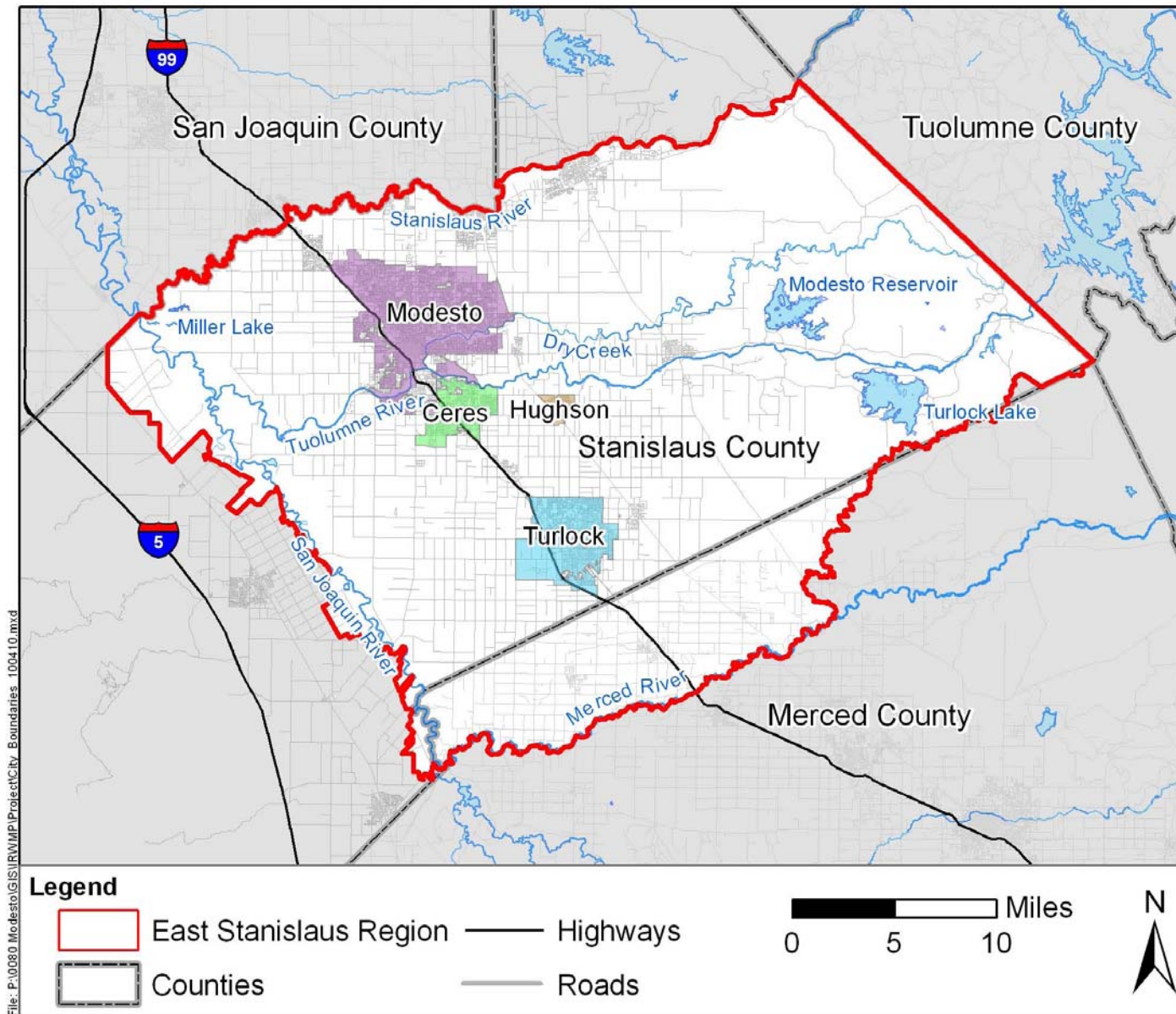


Figure 6-3: Disadvantaged Communities Located in the East Stanislaus Region

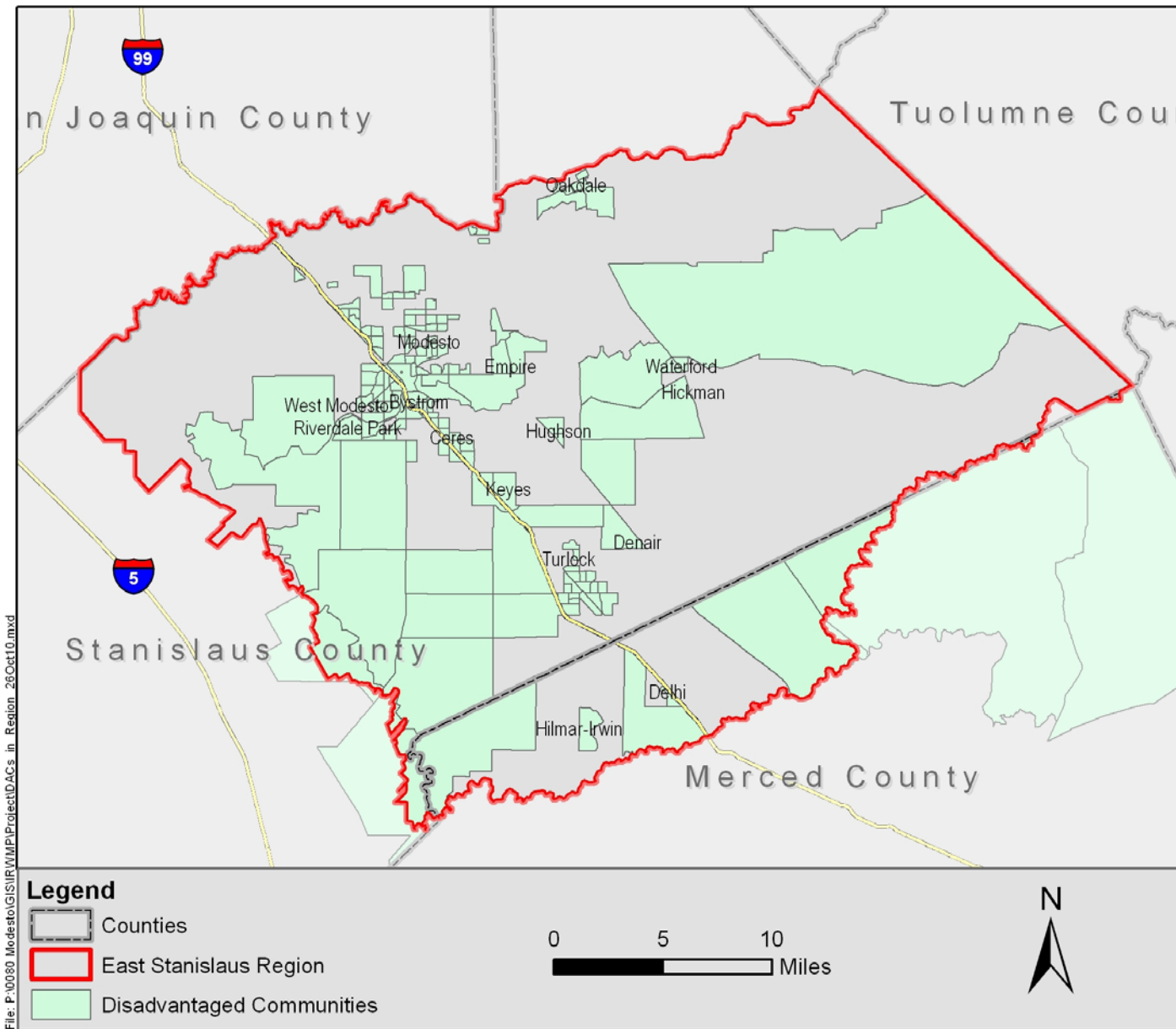


Figure 6-4: Surface Water and Groundwater Features in and adjacent to the East Stanislaus Region

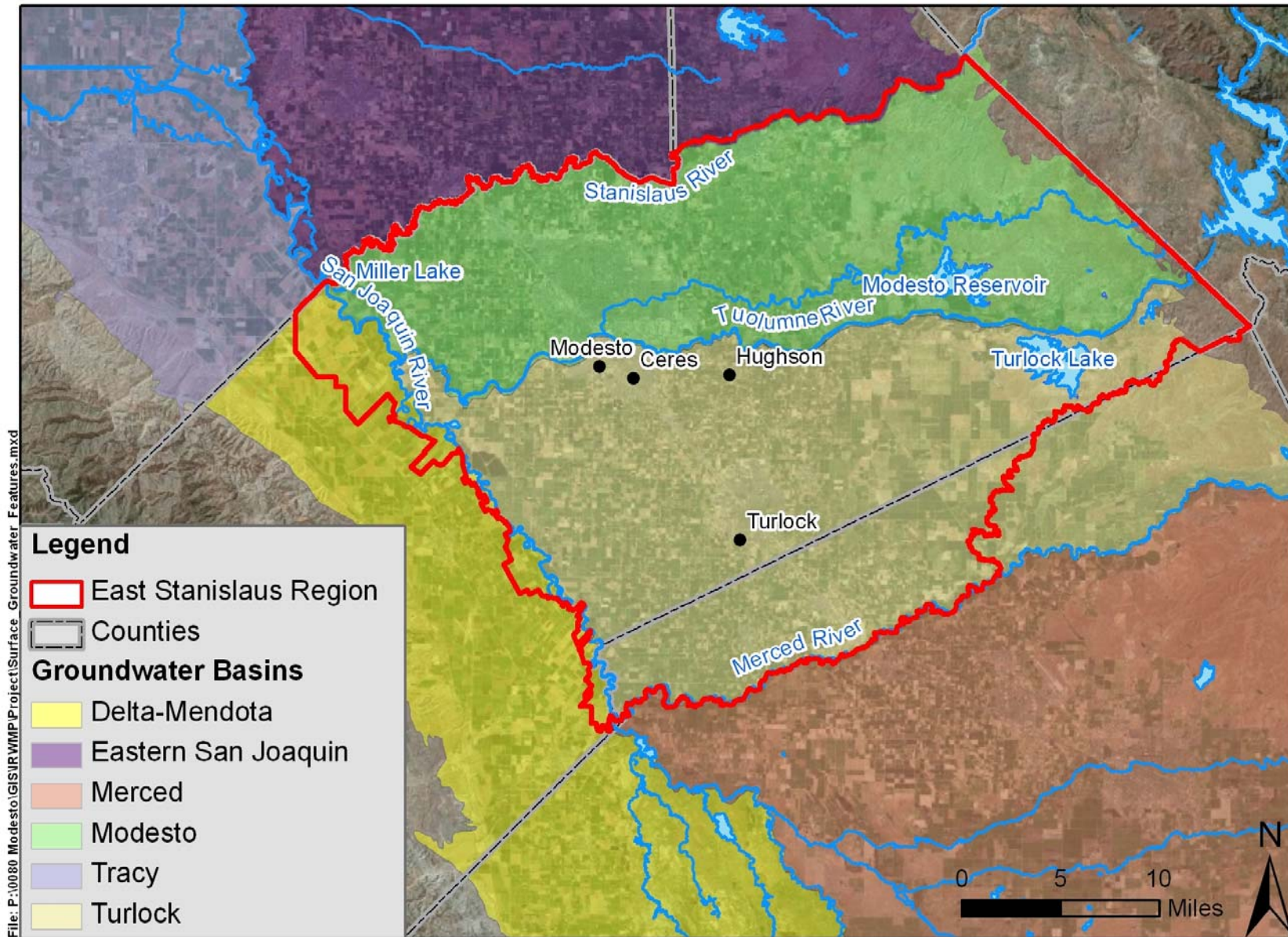
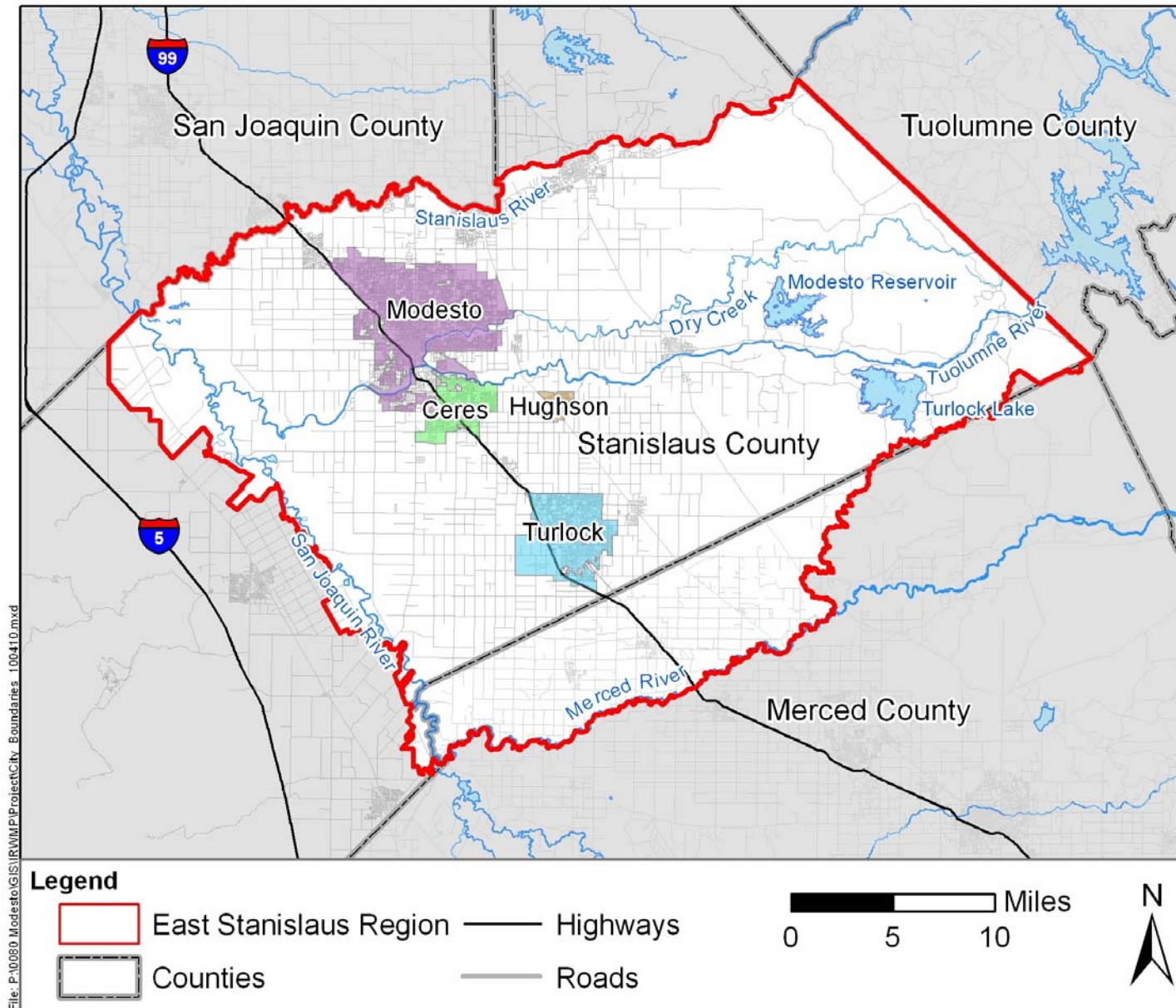




Figure 6-5: 100-Year Flood Plain Maps for Water Bodies within the East Stanislaus Region



## Chapter 7 Water Management History

Historically, there have not been any official IRWM planning efforts in the East Stanislaus Region, but entities within the East Stanislaus Region have worked together on various water projects over the years and have maintained an ongoing collaborative relationship through groundwater management groups, Directors meetings, and other efforts. Some of the historical water-related planning efforts are project based, while others are related to a broader discussion of water resources-related issues. Some of these historical planning efforts are described as follows:

- **Turlock Groundwater Basin Association (TGBA).** Participating agencies in the TGBA include the Turlock and Merced irrigation districts; the cities of Ceres, Turlock, Modesto and Hughson; the Hilmar and Delhi county water districts; the Keyes, Denair and Ballico community services districts; the Eastside and Ballico-Cortez water districts; and Stanislaus and Merced counties. These agencies have been cooperating on groundwater management activities in the Turlock Groundwater Basin since the mid-1990s.
  - Pursuant to State Law, the purpose of the TGBA is to manage the groundwater resources within the Turlock Groundwater Basin. The guiding document for the Association is the Groundwater Management Plan (GWMP), prepared and adopted pursuant to state legislation (AB 3030) signed into law January 1, 1993. The first GWMP was adopted in 1997; it was updated and re-adopted in 2008 to reflect the current conditions in the basin area. The TGBA will continue to coordinate in the future and update the GWMP as necessary in order to successfully manage groundwater resources and the basin.
  - A water balance study of the Turlock Subbasin was prepared in 2003 and updated in 2007 to estimate the inflows and outflows from the Subbasin between 1952 and 2006. Recent groundwater data indicate that the basin may no longer be in a state of equilibrium, in which outflows have started to exceed inflows. While there is uncertainty about the causes, it is believe to a combination of increased urbanization, recent dry years, and increased agricultural production (acreage) in the eastern hills (Turlock Lake area) which relies solely on groundwater for irrigation. The water balance study highlighted the importance of studying the issue in more detail and for member agencies to collaborate more closely on groundwater management issues within the entire Subbasin area.
  - In response to the requirements SBx7-6, the TGBA submitted an application to DWR to comply with requirements as a Cooperative Groundwater Monitoring Association. This has necessitated the formation of a SBx7-6 Committee to assist in coordinating compliance activities including, but not limited to: representing the Association at meetings regarding SBx7-6; development of draft submittals to DWR for the Association's approval; and coordinating implementation of a monitoring program with DWR and local agencies.
- **The Turlock Regional Water Quality Control Facility (RWQCF).** The Turlock Regional Water Quality Control provides tertiary treatment of wastewater from the City of Turlock and the community service districts of Keyes and Denair requiring on-going communication and coordination. Furthermore, the Turlock RWQCF processes one mgd of wastewater from the City of Ceres (approximately 30% of Ceres' total flow); this wastewater is partially treated before being sent to Turlock. Ceres has purchased the rights to discharge an additional 1 mgd of wastewater to Turlock and the pipeline from Ceres to Turlock has a total hydraulic capacity of 6.5 mgd to allow for further regionalization efforts.
- **Wastewater Regionalization.** In November 2010, Erler & Kalinowski, Inc. ("EKI") completed an evaluation of the feasibility of forming a regional system to provide wastewater services to the Cities of Modesto, Ceres, and/or Turlock. The Study Area consisted of the Cities of Modesto,

Ceres, and Turlock. The study identified and evaluated options for wastewater regionalization in the Study Area and evaluated the feasibility of these options on a technical, economic, and legal basis. The Study found that there are significant operational efficiencies to be realized by combining wastewater treatment and disposal systems in the Study Area. According to a conceptual-level cost evaluation, the potential combined savings across all three cities on a 30-year present worth basis appear to be in the ballpark of \$100 million. The cities will continue to coordinate on the potential for wastewater regionalization.

- **Regional Surface Water Supply Project (RSWSP).** For the past several years, the Cities of Turlock, Modesto, Ceres and Hughson, have been negotiating with TID to receive treated water from the Tuolumne River to supplement current potable water supplies. The participating cities would pay the full costs of building and operating the plant. TID and the cities continue to coordinate the planning and implementation of this water supply project.
- **North Valley Regional Recycled Water Program (NVRWP).** This is a proposed recycled water project to deliver up to 30,930 AFY of tertiary-treated recycled water to the drought-impacted west side of Stanislaus County, primarily the Del Puerto Water District. The recycled water will be used for agricultural irrigation. This quantity of water would be available from the combined Cities of Modesto-Turlock-Ceres effluents and could irrigate 15,600 acres of land per year (at two acre-feet per acre of applied water). An additional 15,682 acre-feet per year of recycled water will be made available once the City of Modesto upgrades its secondary-treated wastewater treatment plant to tertiary levels. At the above-described build-out scenario, a total of 46,900 acre-feet per year of recycled water would be available for unrestricted farmland irrigation. The cities are coordinating with Del Puerto Water District to determine project feasibility.
- **Strategic Growth Council Regional Sustainability Toolbox.** Stanislaus County, and the Cities of Ceres, Hughson, Modesto, Newman, Oakdale, Patterson, Riverbank, Turlock and Waterford prepared and submitted a joint funding request to the California Strategic Growth Council for the Stanislaus County Regional Sustainability Toolbox. The Toolbox will include the development of multiple planning tools to achieve greenhouse gas reductions in the region, comprised of eleven components. For example, Water Efficient Landscape Guidelines and Standards will be developed, as well as Low Impact Developments Standards and Specifications.
- **Turlock Irrigation District Fuel Cell.** TID completed construction of the largest Fuel Cell plant in California, giving them the capability of generating 1.2 megawatts. The Fuel Cell is located at the City of Turlock's Regional Water Quality Control Facility and is based on a partnership with Turlock to take methane gas, a byproduct of their wastewater treatment process and convert it to renewable energy. The City of Turlock provided the property for the new power plant and the methane gas. Previously, the methane gas was utilized to operate three boilers with the remaining portion being flared off. Waste heat from the fuel cell reaction will be utilized to heat water for various processes at the wastewater treatment facility.
- **Modesto Regional Water Treatment Plant (MRWTP) Phases 1 & 2.** This is an on-going effort between the City of Modesto and the Modesto Irrigation District (MID) to deliver treated Modesto Reservoir surface water to the City of Modesto as well as other communities adjacent to Modesto for which Modesto owns and operates the water systems. In 1992, the City and MID entered into a Treatment and Delivery Agreement to construct Phase 1 of the MRWTP, fourteen miles of conveyance piping, two terminal reservoir tanks and pumping facilities for the delivery of 30 mgd. Since 1995, Modesto has been receiving these surface water deliveries. In 2005, the City and MID entered into an Amended and Restated Treatment and Delivery Agreement to construct Phase 2 of the MRWTP which would increase treated surface water deliveries to 60 mgd. The Phase 2 project is currently under construction and is expected to be operational by 2013.

- **Stanislaus and Tuolumne Rivers Groundwater Basin Association (STRGBA).** The Cities of Modesto, Oakdale and Riverbank, MID, Oakdale Irrigation District, Stanislaus County are members of the STRGBA which was formed in 1994. The purpose of the association is to manage the groundwater resources within the Modesto Groundwater Basin. The STRGBA developed and adopted an Integrated Regional Groundwater Management Plan (IRGMP) in 2005 pursuant to state legislation SB1938. The STRGBA is working with the United States Geological Survey (USGS) through a contract on developing a groundwater model for the Modesto Groundwater Basin and has nearly completed this effort. This effort will characterize the basin and provide modeling capabilities for various groundwater scenarios. To comply with SBx7-6 State legislation requiring groundwater monitoring, passed in 2009, the STRGBA submitted an application to the DWR stating its intent as a Cooperative Groundwater Monitoring Association to submit a groundwater monitoring program for the Modesto sub-basin.
- **Well Field Optimization Study Phases 1 and 2.** The STRGBA received a \$250,000 grant under the AB303 legislation to develop a Well Field Optimization Program. Phase 1 of this program is to develop and implement the first of the nine IRGMP management actions; more specifically to operate wells to meet water supply demands, lower pumping power costs and prioritize well usage, maintain groundwater levels to satisfy Basin Management Objectives (BMOs), manage quality of discharge water and, increase effectiveness of shallow groundwater management. This Study was completed in June 2007. Phase 2 expands the program to include aspects specific to urban purveyors of groundwater but with similar goals of facilities inventory and maintaining groundwater levels to satisfy BMOs. A Consultant has been selected and in the next few months, the effort will commence. It is expected to take 12 to 18 months to complete.
- **Joint Urban Water Management Plans (UWMP).** The City of Modesto (City) and the Modesto Irrigation District (MID) are collaborating on the development of a joint 2010 UWMP and will be submitting to DWR a joint document for both water purveyors. The same collaborative effort was conducted for the 2005 UWMP. The reasoning behind this collaborative effort is that Modesto is MID's only retail customer for treated surface water, thus it makes sense to share the effort and cost to submit a document under a single cover.

The primary water regional water management issues and conflicts identified within the East Stanislaus Region include:

- Water supply reliability for both agricultural and urban users.
- Localized flooding and stormwater quality issues.
- Groundwater overdraft and contamination.
- Management and protection of surface water resources as both water supplies and recreation destinations.

Historically, the cities and agencies within the East Stanislaus Region have worked together to develop solutions to the water management issues and conflicts they face; now that the East Stanislaus IRWM Region exists and methodologies for public outreach have been identified, an overall frame of work to identify goals, objectives, and projects will be implemented through the preparation of an Integrated Regional Water Management Plan. This will allow these conflicts and water management issues to be addressed in a collaborative, regional approach while developing a plan for protecting, enhancing and sustaining water resources in the East Stanislaus Region. The regional boundary is appropriate given that these issues can be addressed within the East Stanislaus Region.

## Chapter 8 Inter-Regional Coordination

The proposed East Stanislaus Region borders the Central California, Eastern San Joaquin, Merced, Tuolumne-Stanislaus and Westside-San Joaquin IRWM Regions. The Regional boundaries were developed to fill the void in IRWM coverage in this part of California, as well as balance the need for boundaries based on natural watershed, groundwater basins and political and jurisdictional boundaries. All known adjacent IRWM regions participated in the 2009 Region Acceptance Process; some were approved and others were conditionally approved. The regions adjacent to the East Stanislaus Region are described herein.

**Central California Region:** The proposed region only overlaps with a portion of the conditionally approved Central California IRWMP Region. The Central California Region encompasses the eastern portion of the San Joaquin Valley. The Central California Region's northern border is defined as the watershed boundary of the Merced River, while the East Stanislaus Region's southern boundary is defined as the Merced River, Turlock Irrigation District, and the Turlock groundwater basin. Due to the differences in boundary delineations, a slight overlap exists between the Central California Region and East Stanislaus Region.

**Eastern San Joaquin Region:** The approved Eastern San Joaquin Region shares its southern border with the northern border of the East Stanislaus region. The border is marked by the Stanislaus River and the interface of the Modesto and East San Joaquin groundwater basins. There is no overlap between these two regions.

**Merced Region:** The conditionally approved Merced Region includes the eastern portion of the San Joaquin Valley within Merced County. The Merced and Central California Regions have substantial areas of overlap. The Merced Region defined its northern border as the Merced River, therefore no overlap between the Merced and East Stanislaus Regions exists.

**Tuolumne-Stanislaus Region:** The approved Tuolumne-Stanislaus Region's western border is defined as the Tuolumne County line. The interface between the Tuolumne-Stanislaus and East Stanislaus Regions is the border of Stanislaus and Tuolumne Counties.

**Westside-San Joaquin:** The approved Westside-San Joaquin Region's eastern boundary is adjacent to the East Stanislaus western boundary. This boundary was defined by the Westside-San Joaquin Region using the San Joaquin River, however, the boundary does not strictly follow the river. The western boundary of the East Stanislaus Region simply follows the boundary as defined by the Westside-San Joaquin Region, such that there is no overlap.

As noted above, the East Stanislaus Region was developed to fill in the obvious void in IRWM coverage in the Central Valley. When determining the boundaries for the Region, however, natural water boundaries were also important so that the Region would make sense from a watershed perspective, given the region's use of surface water as part of its supply and distinct features. This criterion resulted in a triangular area in the north-eastern portion of Stanislaus County being uncovered by the East Stanislaus Region. It is not in the Modesto groundwater basin, which was used to determine the northern boundary and its surface water drains into the East San Joaquin Region. This area overlies the Eastern San Joaquin groundwater basin, an area mostly covered by the Eastern San Joaquin IRWM Region. The East Stanislaus Region plans to discuss the triangular gap with the Eastern San Joaquin Region to ensure that stakeholders in that area are not neglected.

The ESRWMP has an ongoing relationship with members of the Westside-San Joaquin IRWM Region in which members of the ESRWMP have attended meetings with the Westside-San Joaquin Region and participated in the planning process. Because development of the East Stanislaus Region is relatively new, relationships with other IRWM regions are in initial stages or have not yet materialized. The

ESRWMP plans to discuss water management strategies that have or will be employed by each of the neighboring IRWM Regions to identify opportunities for inter-regional collaboration and to optimize management strategies.

**Appendix A - East Stanislaus Regional Water Management  
Partnership Draft Memorandum of Understanding**

---

**MEMORANDUM OF UNDERSTANDING**  
**AMONG CITY OF MODESTO, CITY OF TURLOCK, CITY OF HUGHSON, AND CITY OF CERES**  
**FOR INTEGRATED REGIONAL WATER MANAGEMENT PLANNING**

This Memorandum of Understanding (MOU) dated \_\_\_\_\_, 2011 is entered among the City of Modesto, City of Turlock, City of Hughson, and City of Ceres (collectively known as the East Stanislaus Regional Water Management Partnership or Partnership) for the purposes of coordinating water resources planning activities undertaken by the cities / water agencies and to establish mutual understandings of East Stanislaus area agencies with respect to their joint efforts in developing an Integrated Regional Water Management Plan (Plan) that will increase regional coordination, collaboration and communication and help in obtaining funding for water-related projects.

**WHEREAS**, the California Legislature enacted SBX2 1 (Perata, Chapter 1 Statues of 2008), the Integrated Regional Water Management Planning Act, which provides that a regional water management group may prepare and adopt an Integrated Regional Water Management Plan.

**WHEREAS**, In November 2006, the Safe Drinking Water, Water Quality and Supply, Flood Control, Rover and Coastal Protection Act (Prop 84), authorized the Legislature to appropriate funding for competitive grants for projects included in Integrated Regional Water Management Plans.

**WHEREAS**, on June 22, 2010 the Cities of Ceres, Hughson, Turlock and Modesto adopted and entered into a cost sharing agreement for the preparation of an Integrated Regional Water Management Plan.

**WHEREAS**, the Partnership is submitting an application for an Integrated Regional Water Management Plan Region approval, which includes descriptions of the regional boundary, the Partnership, Committees, and governance structure, among other topics, through the Department of Water Resources (DWR) Region Acceptance Process.

**WHEREAS**, the signatories of this MOU anticipate the potential need for future agreements on specific projects or programs and with other affected agencies to further coordinate long-term water resources planning.

**WHEREAS**, this MOU does not prevent any signatory from pursuing other projects individually and participation in Plan planning is nonbinding, and in no way impacts an agency's ability to plan and undertake efforts to plan for projects or secure project funding from any source. An agency may withdraw from Partnership participation at any time.

**Now, therefore**, the following is mutually understood and agreed:

**1. GOALS**

The goals of the Plan are:



1.1. To develop a comprehensive planning document to facilitate regional cooperation in providing water supply reliability, water recycling, water conservation, water quality improvement, storm water capture and management, flood management, wetlands enhancement and creation, and environmental and habitat protection and improvement.

1.2. To foster coordination, collaboration and communication Partnership agencies responsible for water-related issues and interested stakeholders, to achieve greater efficiencies, enhance public services, and build public support for vital projects.

1.3. To improve regional competitiveness for State and Federal grant funding.

## **2. DEFINITIONS**

2.1. Integrated Regional Water Management Plan. The Integrated Regional Water Management Plan envisioned by state legislators and state resource agencies that integrates the projects and management plans of all water-related agencies and stakeholders in a region, in this case the East Stanislaus Region, in order to foster coordination, collaboration and communication among those entities and to assist decision-makers in awarding grants and other funding. The Plan will address water supply, water quality, wastewater, stormwater/flood control, watershed planning and habitat protection and restoration.

2.2. Agency. A public entity, be it a special district, city or other governmental entity, responsible for providing one or more services in the areas of water supply, water quality, wastewater, recycled water, water conservation, stormwater/flood control, watershed planning and habitat protection and restoration.

2.3. Service function. A water-related individual service function provided by an agency, i.e. water supply, water quality, wastewater, recycled water, water conservation, stormwater/flood control, watershed planning, and habitat protection and restoration.

2.4. Project. A comprehensive list of resource-related projects or programs that yield multiple benefits including one or more of the following: water supply reliability, water conservation and water use efficiency; stormwater capture, storage, clean-up, treatment and management; removal of invasive non-native species, the creation and enhancement of wetlands, and the acquisition, protection, and restoration of open space and watershed lands; non-point source pollution reduction, management and monitoring; groundwater recharge and management; contaminant and salt removal through reclamation, desalting, and conveyance of reclaimed water to users; water banking, exchange, reclamation and improvement of water quality; planning and implementation of multipurpose flood management programs; watershed protection and management; drinking water treatment and distribution; ecosystem and fisheries restoration and protection.

2.5. Management plan. An agency's or organization's plan, based in part on the land-use plans within the entity's jurisdiction, that addresses how that entity will provide service in the future in one or more of the following service functions: water supply, water quality, wastewater, recycled water, water conservation, stormwater/flood control, watershed planning or habitat protection and restoration.

2.6. Integration. Assembling into one document the water-related management strategies, projects and plans in the East Stanislaus Region. The first phase would be to identify water management strategies for the region and the priority projects that work together to demonstrate how these strategies work together to provide reliable water supply, protect or improve water quality, provide watershed protection and planning, and provide environmental restoration and protection. Projects and plans would be categorized and opportunities to identify regional benefits of linkages between multiple water management strategies among projects and plans of separate service functions and to see where projects and plans of separate service functions may further interrelate, e.g. wastewater treatment and water recycling or habitat restoration.

### **3. PLAN PROJECT PARTICIPANTS**

3.1. Public agencies. Public agencies, which have developed projects and management plans, are responsible to their respective electorates, and are devoting staff to the process, will act as the lead voice in the IRWM planning process as described in “Approach to developing the Plan” below. These agencies will be the signatories to this MOU.

3.2. Contributing entities. Other non-public entities, such as business and environmental groups, are considered valuable contributors and will continue to be invited and encouraged to participate.

3.3. Regulatory agencies. These agencies, such as the Regional Water Quality Control Board and the Department of Fish and Game, will be invited to participate.

3.4 Stakeholders and disadvantaged communities. The Signatories understand that a collaborative effort with stakeholders and disadvantaged communities, regardless of their ability to contribute financially, is vital to a successful Plan planning process and ultimate preparation of a Plan. The public at large, stakeholders, and disadvantaged communities will be asked to participate in the planning process and will be given opportunities to provide input and comments on the preparation of a Plan.

### **4. MUTUAL UNDERSTANDINGS**

4.1. An IRWM Plan is needed for the following reasons:

4.a. To foster increased coordination, collaboration and communication between East Stanislaus water-related agencies and interested stakeholders that may result in more effectively managed resources, cost efficiencies and better service to the public.

4.b. Some state grants and other funding opportunities require development and implementation of an Integrated Regional Water Management Plan.

4.2 Future cost sharing agreements will be developed among the Partnership members, as needed.

4.3. The Plan will include, but may not necessarily be limited to, water supply, water quality, wastewater, recycled water, water conservation, stormwater/flood control, watershed planning and habitat protection and restoration. It is acknowledged that the management plans of each individual

public agency are based, in part, on the land-use plans within an agency's jurisdiction. Therefore, the resultant Plan will by design have incorporated the land-use plans and assumptions intrinsic to the respective water-related service function.

4.4. The East Stanislaus Region for this MOU is defined as a portion of eastern Stanislaus County that includes the signatories' service areas and is bounded by the Merced River on the South and Stanislaus River on the north. A full description of the regional boundary will be included in the Region Acceptance Process application which will be submitted to DWR for approval.

4.5. Approach to developing the Plan

4.5.1. A reasonable approach towards developing the Plan is to first identify the roles and responsibilities of the representatives and stakeholders involved. The governance structure and public outreach sections of the Region Acceptance Process application will more thoroughly describe these groups and their roles.

4.5.2. The proposed forum for this regional planning effort is through the creation of the Partnership, Steering Committee, Stakeholder Committee and Stakeholder Subcommittees. Agencies, entities, and the public at large will be invited to participate in the effort. Throughout the Plan planning process, the Partnership will have final decision-making authority.

4.6. Decision-making. Consensus will be sought in the event the need for a decision arises. A governance structure will be developed outlining the decision making process.

4.7. Approval of the Plan. Plan approval and adoption is expected by each Partnership member. Should a Partnership member refuse to adopt the Plan, the reasons for refusal will be cited and attempts will be made to reconcile any differences. Should the differences remain irreconcilable, the dissenting member will be asked to withdraw from participation in the Partnership.

4.8. Non-binding nature. This document and participation in this Plan effort are nonbinding, and in no way suggest that an agency may not continue its own planning and undertake efforts to secure project funding from any source. An agency may withdraw from Partnership participation at any time.

4.9. Personnel and financial resources. It is expected that the signatories of the MOU will contribute the personnel and financial resources necessary to develop and implement the Plan.

4.10. Other on-going regional efforts. Development of the Plan is separate from efforts of other organizations to develop water-related plans on a regional basis. As the Plan is developed, work products can be shared with these other organization.

4.11. Reports and communications. The Steering Committee will regularly report on the progress of the Partnership to the agencies and stakeholders they represent and the associations or organizations to which they belong that are involved in the Plan process.

4.12. Termination. Because the Plan will require periodic review and updating for use into the future, it is envisioned that the joint efforts of those involved will be on-going in maintaining a living document. Thus this document will remain a reflection of the understandings of the participants when they signed the MOU. As indicated, individual signatories of the Partnership MOU may terminate their involvement at any time.

**5. SIGNATORIES TO THE MEMORANDUM OF UNDERSTANDING**

We, the undersigned representatives of our respective agencies, acknowledge the above as our understanding of how the East Stanislaus Integrated Regional Water Management Plan will be developed.

\_\_\_\_\_  
signature

\_\_\_\_\_  
printed name

\_\_\_\_\_  
agency

\_\_\_\_\_  
date

\_\_\_\_\_  
signature

\_\_\_\_\_  
printed name

\_\_\_\_\_  
agency

\_\_\_\_\_  
date

\_\_\_\_\_  
signature

\_\_\_\_\_  
printed name

\_\_\_\_\_  
agency

\_\_\_\_\_  
date

\_\_\_\_\_  
signature

\_\_\_\_\_  
printed name

\_\_\_\_\_  
agency

\_\_\_\_\_  
date

\_\_\_\_\_  
signature

\_\_\_\_\_  
signature

\_\_\_\_\_  
printed name

\_\_\_\_\_  
agency

\_\_\_\_\_  
date

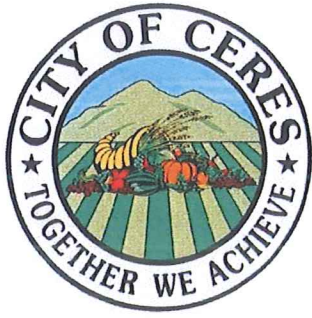
\_\_\_\_\_  
printed name

\_\_\_\_\_  
agency

\_\_\_\_\_  
date

DRAFT

## **Appendix B - Letters from ESRWMP Member Agencies**



Public Works Department  
Engineering Division  
2220 Magnolia Street  
Ceres, CA 95307  
209-538-5792  
Fax 209-538-5759

**CITY COUNCIL**

Chris Vierra – Mayor

Ken Lane

Guillermo Ochoa

Bret Durossette

Date: March 30, 2011

Jim Alves  
Associate Civil Engineer  
City of Modesto  
P. O. Box 642  
1010 Tenth Street  
Modesto, California 95353

Subject: Authorization for City of Modesto to Submit the East Stanislaus RAP  
Application

Dear Mr. Alves:

This letter is to provide authorization to the City of Modesto to act as the submitting entity and submit the East Stanislaus Region Acceptance Process (RAP) Application on behalf of the East Stanislaus Regional Water Management Partnership (ESRWMP) and the City of Ceres.

The City of Ceres is in full support of the East Stanislaus Integrated Regional Water Management (IRWM) Planning process and will work with the ESRWMP to develop an IRWM Plan. The City also intends to adopt the IRWM Plan upon completion.

If you have any questions, please call me at 298-538-5630.

Regards,

Michael F. Brinton  
Acting City Engineer

Cc Deputy Acting City Manager



ROY W. WASDEN  
CITY MANAGER  
[rwasden@turlock.ca.us](mailto:rwasden@turlock.ca.us)

OFFICE OF THE CITY MANAGER  
ADMINISTRATION



---

156 S. BROADWAY, SUITE 230 | TURLOCK, CALIFORNIA 95380 | PHONE 209-668-5540 | FAX 209-668-5668

March 29, 2011

Mr. Jim Alves, Assoc. Civil Engineer  
City of Modesto  
1010 Tenth St  
Modesto, CA 93902

Subject: Authorization for City of Modesto to Submit East Stanislaus RAP Application

Dear Mr. Alves:

This letter is to permit the City of Modesto to act as the submitting entity and submit the East Stanislaus Region Acceptance Process (RAP) Application on behalf of the East Stanislaus Regional Water Management Partnership (ESRWMP) and City of Turlock.

The City of Turlock is in full support of the East Stanislaus Integrated Regional Water Management (IRWM) Planning process and will work with the ESRWMP to develop an IRWM Plan. The City also intends to adopt the IRWM Plan upon completion.

If you have any questions, please call me at (209) 668-5540.

Sincerely,

ROY W. WASDEN  
City Manager

RWW:dm:kew

cc: Dan Madden





April 7, 2011

Mr. Jim Alves  
Associate Civil Engineer  
City of Modesto  
1010 Tenth St  
Modesto, CA 93902

Subject: Authorization for City of Modesto to Submit East Stanislaus RAP Application

Dear Mr. Alves:

This letter is to permit the City of Modesto to act as the submitting entity and submit the East Stanislaus Region Acceptance Process (RAP) Application on behalf of the East Stanislaus Regional Water Management Partnership (ESRWMP) and the City of Hughson.

The City of Hughson is in full support of the East Stanislaus Integrated Regional Water Management Planning process and will work with the ESRWMP to develop an IRWM Plan. The City also intends to adopt the IRWM Plan upon completion.

If you have any questions, please call me at the number above.

Sincerely,

A handwritten signature in blue ink that reads "Thomas Clark".

Thomas Clark  
Community Development Director/Director of Public Works

## **Appendix C - Public Meeting Materials**

---

*You're invited to a community workshop...*

Help us prepare the East Stanislaus Integrated Regional Water Management Plan!

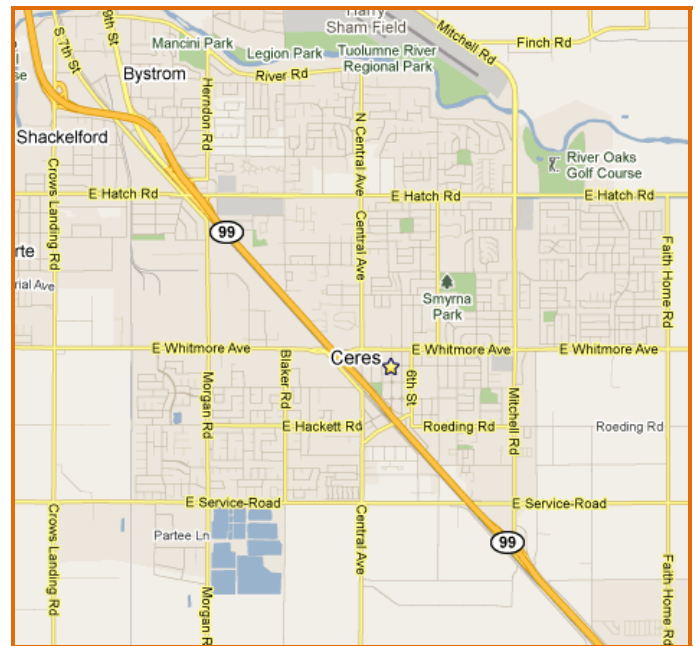
**Working together to manage surface and groundwater resources**



**Snacks and Beverages will be provided!**

**WHEN:** Wednesday, March 16 – 5:30 p.m.

**WHERE:** Ceres Community Center  
2701 4<sup>th</sup> Street, Ceres



- Learn about Integrated Regional Water Management Planning;
- Hear a presentation on the process for preparing the plan;
- Explore possible regional visions, goals and objectives;
- Learn how you can participate.

**For more information on the workshop, contact:**

**Jim Alves**  
Associate Civil Engineer  
City of Modesto  
(209) 571-5557 or [jalves@modestogov.com](mailto:jalves@modestogov.com)

This meeting is sponsored by:

**ESRWMG**

**EAST STANISLAUS REGIONAL  
WATER MANAGEMENT GROUP**

*Uste esta invitado a un taller para la comunidad ...*

Ayudenos a preparar el plan de Administración Integral del agua regional del este del condado de Stanislaus!

**Trabajemos juntos para administrar los recursos locales del agua de superficie y agua subterránea**

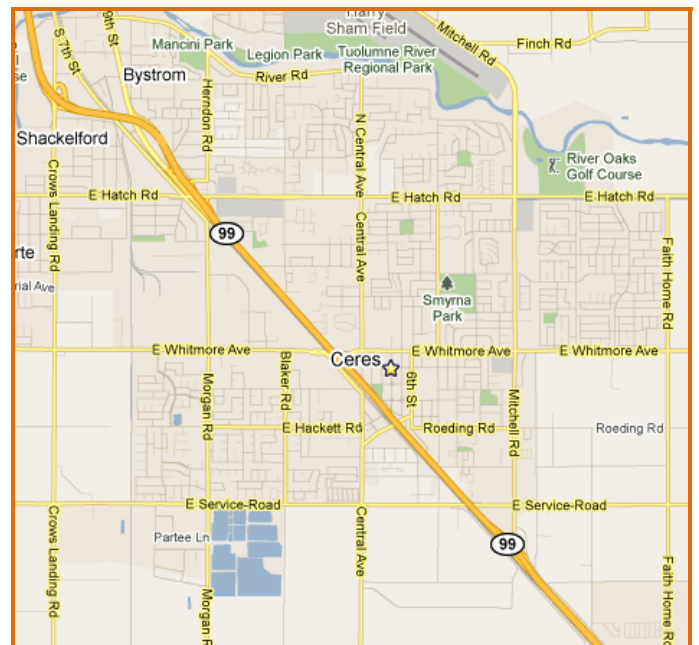


- Aprenda lo relacionado con el planeamiento de la administración integral del agua regional;
- Escucharemos una presentación acerca del proceso de la preparación del plan;
- Examinaremos posibles visiones regionales, metas y objetivos;
- Aprenda como usted puede participar.

**Habr  refrescos y antojitos!**

**FECHA:** El mi rcoles 16 de marzo del 2011 a las 5:30 de la tarde

**LUGAR:** El centro de la comunidad de la ciudad de Ceres. 2701 4th Street, Ceres



Para m s informaci n sobre el taller favor de ponerse en contacto con:

**Jim Alves**

Ingeniero Civil Asociado  
de la ciudad de Modesto  
tel. (209) 571-5557 or correo electronic  
jalves@modestogov.com

Esta junta es patrocinada por:

**ESRWMG** (Por sus siglas en ingl s)

**EAST STANISLAUS REGIONAL  
WATER MANAGEMENT GROUP**

# *East Stanislaus Integrated Regional Water Management Plan*

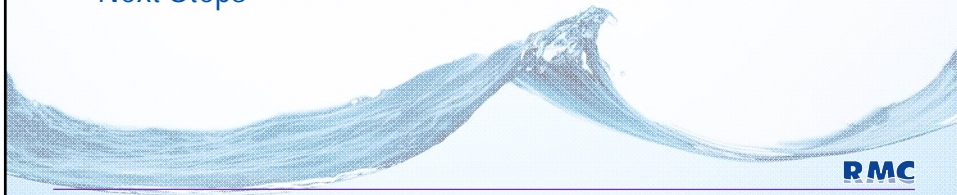


January 26, 2011

*Innovative Solutions for  
Water and the Environment*

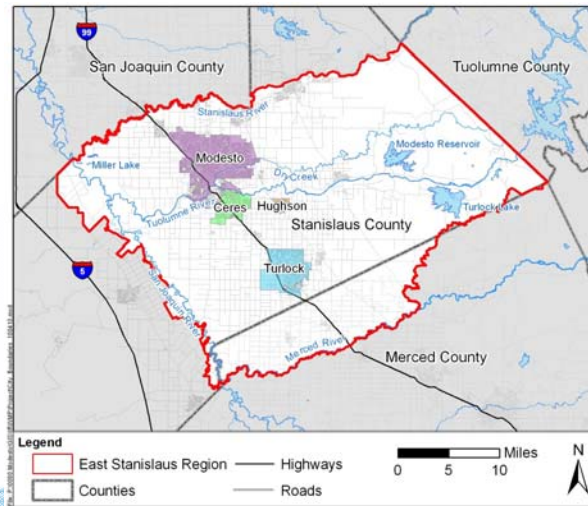
## **Meeting Agenda**

- Introductions
- Summary of Integrated Regional Water Management Program
- East Stanislaus Region
- East Stanislaus IRWM Planning Process
- Governance and Public Involvement
- Next Steps



## Introductions

- City of Modesto
- City of Hughson
- City of Ceres
- City of Turlock



RMC

## Meeting Agenda

- Introductions
- **Summary of Integrated Regional Water Management Program**
- East Stanislaus Region
- East Stanislaus IRWM Planning Process
- Governance and Public Involvement
- Next Steps

RMC

## **An Integrated Regional Water Management (IRWM) Plan is...**

- A planning document
- A description of water-related resources, challenges, goals, and solutions
- An opportunity for regional partnerships and coordination
- Facilitating to State funding

**RMC**

## **An IRWM Plan is not...**

- A substitute for local planning
- A decrease in agency responsibilities or autonomy
- A policy document
- Comprehensive project documentation

**RMC**

## The Purpose of an IRWM Plan is to...

- Develop regional understanding
- Identify water resources solutions
- Reflect the regional needs
- Maximize benefits through integration of water management strategies
- Leverage regional resources through partnerships
- Be eligible for State funding through the IRWM grant program



RMC

## Contributors Include...

- Water and Wastewater Agencies
- Counties
- Cities
- Public Groups
- Private Organizations
- Members of the Public



RMC



## An IRWM Plan and Process Helps by...

- Consolidating information
- Encouraging discussion among stakeholders
- Evaluating projects on a regional scale
- Increasing chances of project implementation
  - Combining projects
  - Implementation funding

RMC

## Meeting Agenda

- Introductions
- Summary of Integrated Regional Water Management Program
- **East Stanislaus Region**
- East Stanislaus IRWM Planning Process
- Governance and Public Involvement
- Next Steps

RMC

## An IRWMP Region is...

- Defined by those organizations creating it
- Defined by water management issues and potential solutions
- Not restricted to political boundaries
- Typically within a State Hydrologic Area

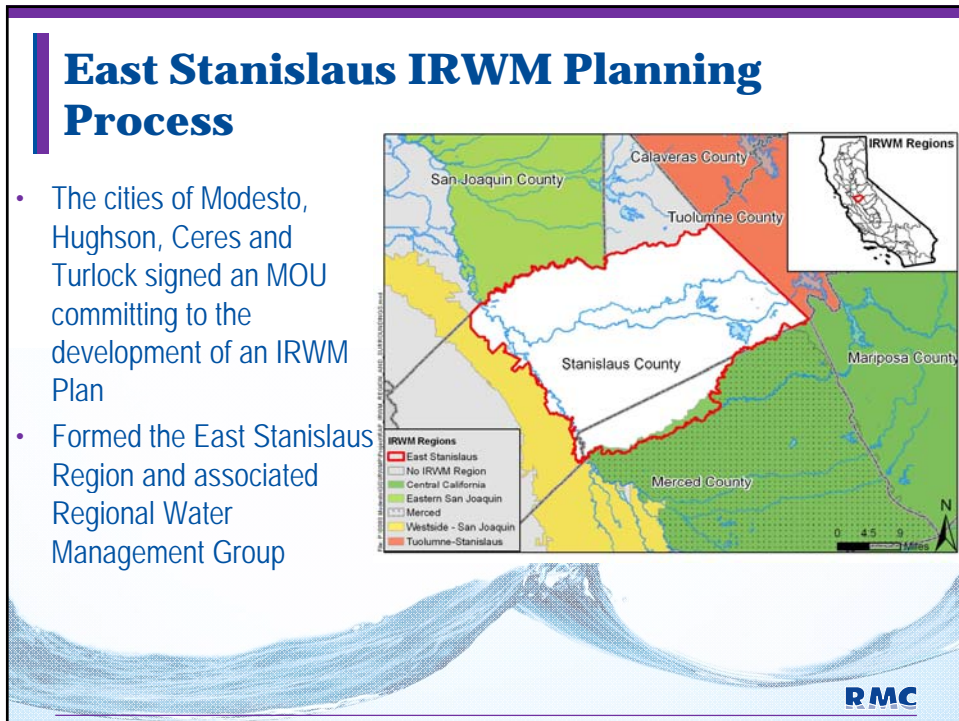
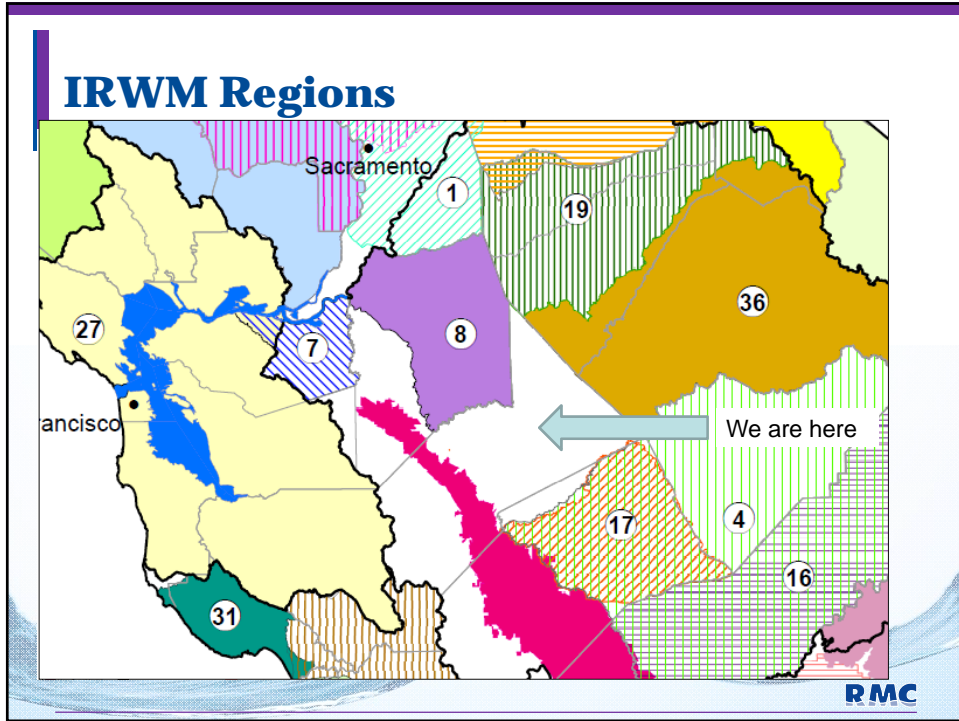
## *The East Stanislaus Region Includes...*

- Portions of Stanislaus and Merced Counties
- Cities of Modesto, Hughson, Turlock, Ceres, Patterson, Newman, Riverbank, Waterford, and Oakdale
- Communities of Keyes, Denair, Del Rio, Riverdale, Grayson, Hickman, Empire, Salida, Hilmar, Delhi, and Keys
- Turlock Irrigation District, Modesto Irrigation District, Eastside Irrigation district, Oakdale Irrigation District, and Merced irrigation District



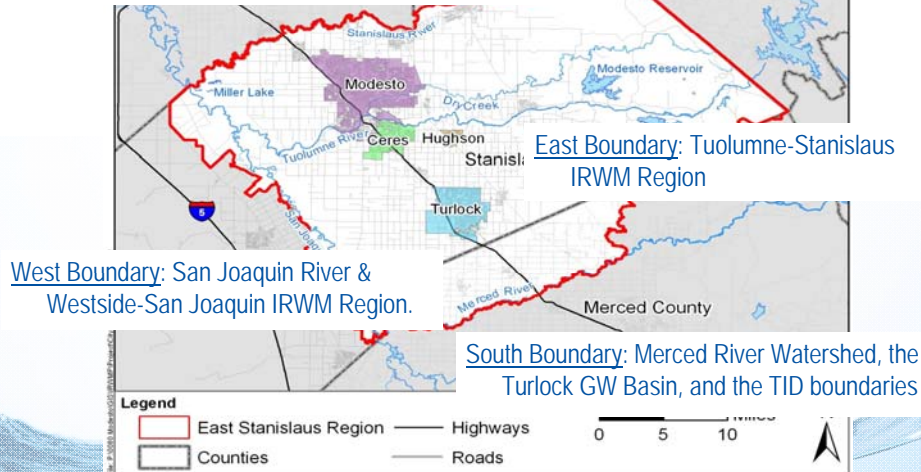
## IRWM Funding Areas Coincide with State Hydrologic Regions





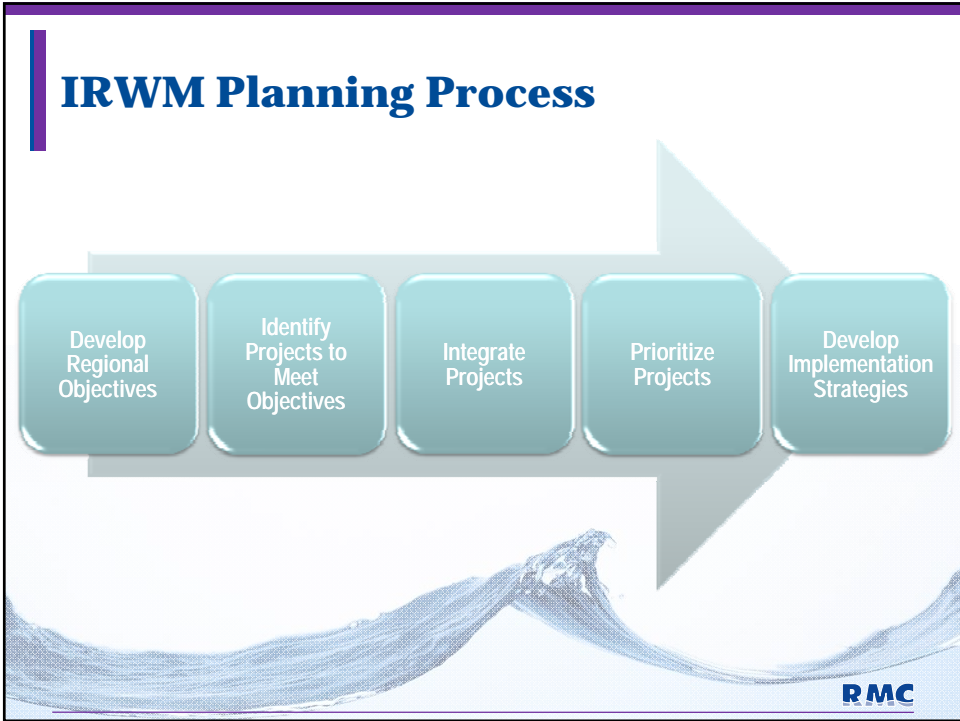
## East Stanislaus Regional Boundaries

North Boundary: Stanislaus River, Modesto Groundwater Basin, and portion of Stanislaus County border



## Meeting Agenda

- Introductions
- Summary of Integrated Regional Water Management Program
- East Stanislaus Region
- **East Stanislaus IRWM Planning Process**
- Governance and Public Involvement
- Next Steps



## Basic Elements of an IRWM Plan Development Process

1. Identify stakeholders and region
2. Clarify regional and local needs
3. Develop regional goals, objectives, & priorities
4. Analyze proposed projects
5. Prioritize projects
6. Develop implementation strategies
7. Compile results into IRWM Plan

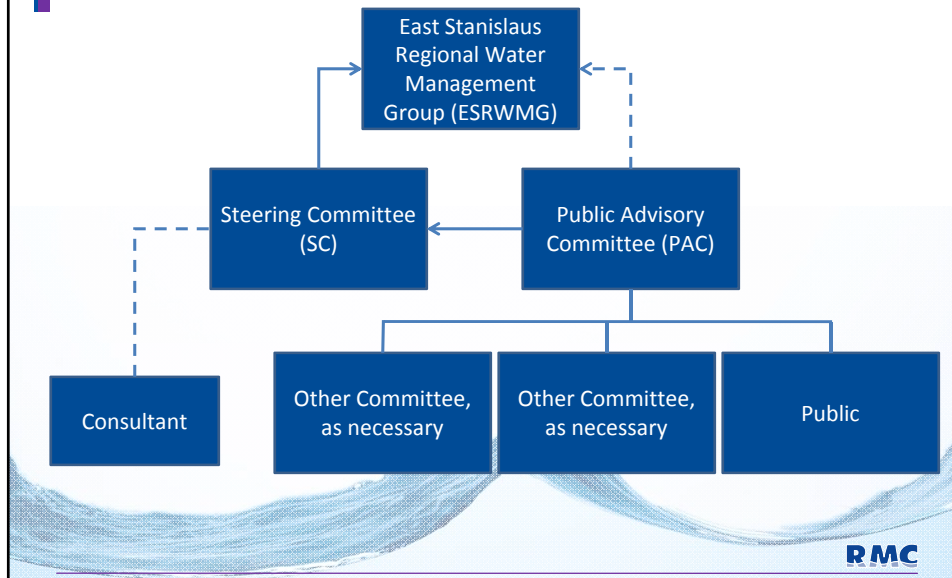


## Meeting Agenda

- Introductions
- Summary of Integrated Regional Water Management Program
- East Stanislaus Region
- East Stanislaus IRWM Planning Process
- **Governance and Public Involvement**
- Next Steps



## Regional Water Management Governance Structure



## Public Involvement

- Cooperation and coordination among regional stakeholders promotes regionalization
- Input and comments from stakeholders maximizes benefits
- Two levels of public involvement:
  - Attendance at open ESRWMG and Steering Committee meetings
  - Public Advisory Committee (PAC) meetings



**You can become a member of the PAC**

RMC

## PAC Member Role & Responsibilities

- Good-faith effort to attend all PAC meetings
- Timely review and response to work products
- Constructively engage with consensus to achieve program goals
- Adopt or provide written support for updated plan



ATTENDANCE SIGN-IN SHEET  
Public Advisory Committee Meeting #1

Name	Organization



## Methods to Provide Input & Obtain Information

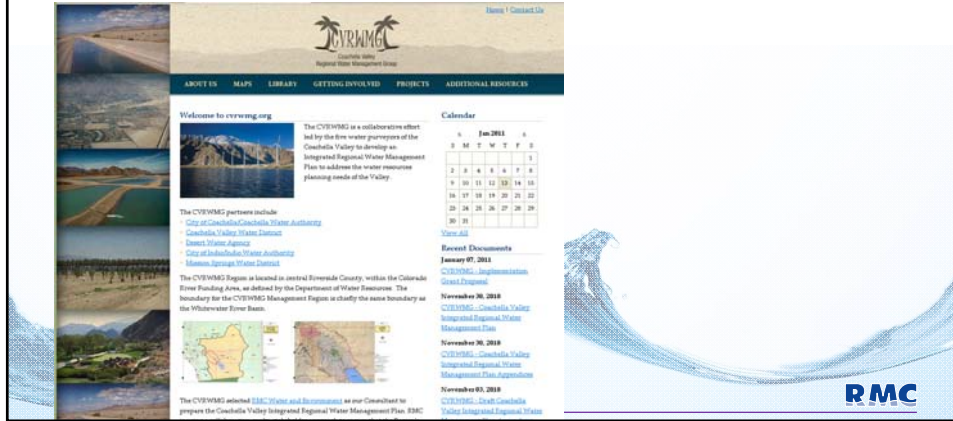
- ESRWMG, Steering Committee, and PAC meetings





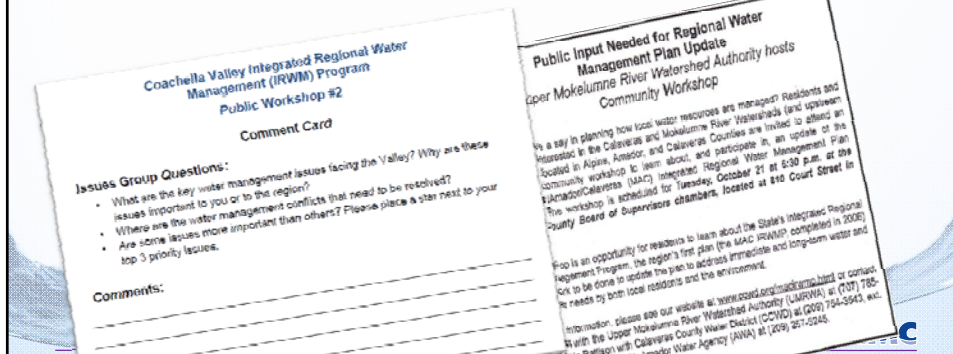
## Methods to Provide Input & Obtain Information

- ESRWMG, Steering Committee, and PAC meetings
- East Stanislaus IRWM planning website (to be developed)



## Methods to Provide Input & Obtain Information

- ESRWMG, Steering Committee, and PAC meetings
- East Stanislaus IRWM planning website (to be developed)
- Handouts, newsletters, advertisements



## Methods to Provide Input & Obtain Information

- ESRWVG, Steering Committee, and PAC meetings
- East Stanislaus IRWM planning website (to be developed)
- Handouts, newsletters, advertisements



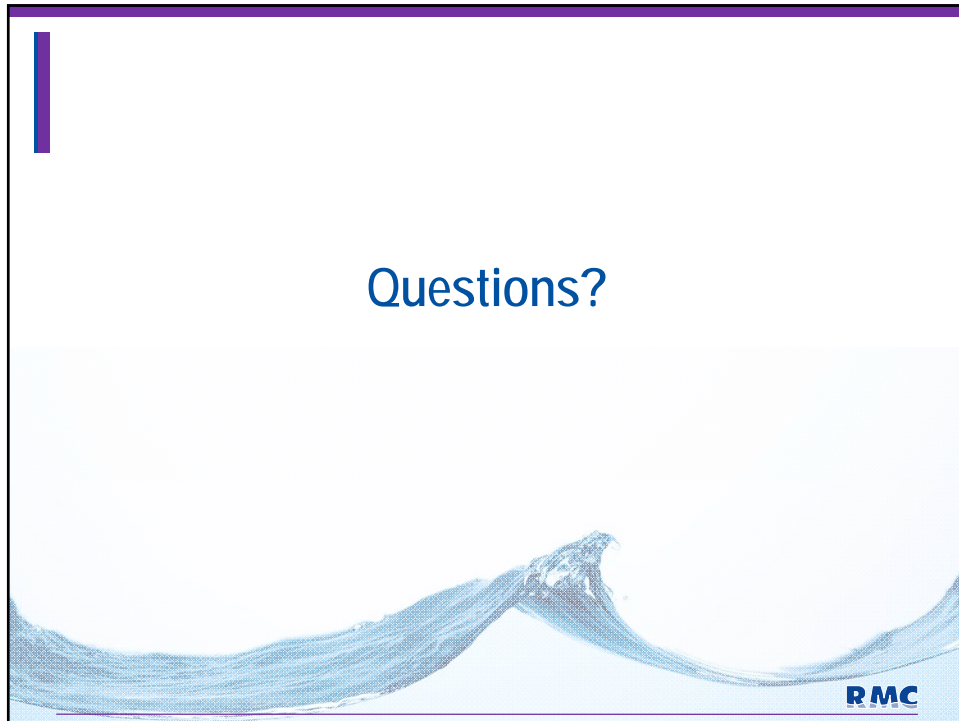
RMC

## Contact Information

Jim Alves  
City of Modesto  
209-571-5557  
jalves@modestogov.com



RMC



## SIGN-UP SHEET FOR EMAIL AND NEWSLETTER UPDATES

NAME	AGENCY	PHONE NUMBER	EMAIL ADDRESS	ADDRESS
Michael Brinton	Ceres	538-5630	ci.ceres.ca.us michael.brinton@	
Alex Cantatore	Turlock Journal	634-9141	acantatore@ turlockjournal.com	138 S. Center St. Turlock, CA 95380
Thom Clark	City of Hughson	883-0811	tclark@hughson .org	
Debbie Liebersbad	Turlock ID	883-8428	dcliebersbad @tid.org	P.O. Box 949 Turlock, CA. 95381
Carrie Cardoza	Cardoza + Assoc.	581-2274	carrie@ gucardoza. com	2020 Stanford Ave #11-3 Mod CA 95350

# IRWMP WORKSHOP SIGN-IN SHEET

	NAME	AGENCY	ADDRESS	PHONE #	EMAIL ADDRESS
1	Camie Cardoza	Cardoza	302 Tree Crest Cir. Oak. CA 95301	581-2274	camie@opcardoza.com
2	Jack Doo	"	P.O. Box 822, Denair 95316	648-4287	jpdoojre@shcglobal.net
3	Keslie Dundas	RMC	200 N. Main, Walnut Crk	925-627-4100	kdundas@rmcwater.com
4	Jim	Modesto	Modesto City Hall	209-571-5557	jakes@modestogov.com
5	GLENN PRASAD	CITY MODESTO	—	209 571 5149	gprasad@modestogov.com
6	DAVID A. FELIX	"	"	(209) 577-5488	DFELIX@MODESTOGOV.COM
7	Rich Ulla	"	"	577-5215	ruulla@modestogas.com
8	DAN MADSEN	C.S.T.	156 S. BROADWAY	209 668-5890	
9	Alex Cantatore	Turlock Jamb	138 S. Center St. Turlock	209 634 9141	acantatore@turlockjournal.com
10	Dave Richardson	RMC	2001 N. Main St. Walnut Creek	(925) 627-4100	d Richardson@rmcwater.com
11	Debbie Lieberski	TID	PO Box 949, Turlock, CA.	(209) 883-8428	dclieberski@tid.org
12	Thom Clark	Hughson		883-0811	tclark@hughson.org
13	Sheila Cumberland	Ceres	2720 Second St Ceres	538-5764	Sheila.Cumberland@ci.ceres.ca.us
14					
15					
16					
17					
18					
19					
20					
21					
22					
23					

## Frequently Asked Questions

*How is IRWM different than what came before?*

In general, IRWM involves looking at water management issues from a multitude of perspectives as diverse stakeholders engage one another. That process can yield multi-benefit projects that meet several entities' goals and objectives in a more cost effective manner than each entity acting on its own. Previously, water management entities tended to work with a narrow focus on their service area and primary function, sometimes competing against similar efforts to resolve similar issues or advancing duplicative efforts.

*Why is IRWM important to me? Why should I participate?*

IRWM operates on the principle that each stakeholder holds a piece of the water management solution for their region and that the best solutions require better communication and understanding of regional issues than has previously occurred. The more partners involved in an IRWM, the higher the potential for better water management solutions.

*In addition to the IRWM grant, are there other sources to fund a project?*

Yes, while recent State bond funding measures have provided a large amount of grant funding specifically for IRWM plans and implementation, there are other opportunities for projects. Various state grant and loan programs, administered by DWR and other state agencies, can provide funding, including: FloodSAFE, urban streams, local groundwater assistance, stormwater quality, rivers and parkways, and state revolving fund loans. Federal funding may also be available for some types of projects. Local financing will make up the largest portion of funding in many regions. The IRWM plan should serve as a strategic investment plan for all sources of funding.



*What's the current state of IRWM planning?*

IRWM planning regions now cover approximately 82% of the area of the State, an increase of 28% in five years. Planning regions include approximately 98% of the population in California, an increase of 4% in five years. IRWM planning regions vary in size. Some cover an entire hydrologic region of the State. In other hydrologic regions there are multiple IRWM planning regions. The largest IRWM planning region is approximately 12.5 M acres and the smallest about 170,000 acres. The enclosed map presents the current IRWM planning regions in the State.

*What is the relationship between local planning and IRWM planning?*

Local planning is important and will continue as not all water resource management issues are regional in nature. In fact, sound local planning helps generate regional issues and objectives that can benefit from integrated solutions.

*What do people involved in IRWM planning regions say?*

Opinions about IRWM vary, but there is broad agreement on some of the factors that lead to successful implementation of the IRWM.

- ◆ IRWM efforts are long term.
- ◆ IRWM efforts yield unprecedented coordination and cooperation.
- ◆ One of the most valuable outcomes of IRWM efforts are the relationships formed between diverse stakeholders.

*How does someone get involved?*

DWR's web site contains contact information for current IRWM efforts (see resources section). If an IRWM effort does not currently exist in your area, you can begin to identify other water management entities in your area to begin the conversation or you can contact one of DWR's regional contacts to begin to connect to others in your area. ☞

## Benefits of IRWM

As indicated in the CWP Update 2009, IRWM is a key initiative to ensuring reliable water supplies in the future. IRWM helps communities and regions incorporate sustainable actions into their water management efforts.

A main focus of IRWM planning is diversification of a region's water portfolio so that multiple resource management strategies are employed in meeting future water and water quality needs of all sectors. This diversification should help regions to better prepare to face an uncertain future of water availability and water use; while protecting and improving water quality and the environment.

As a key initiative in the CWP, IRWM is a long term approach to water management in California. As IRWM evolves, DWR seeks to encourage planning efforts that are collaborative and use broad stakeholder participation to gain the input that leads to diversity of water management strategies. Such planning efforts can live well into the future beyond current state funding incentives. ☞



## Contacts

For more information on Integrated Regional Water Management, please contact us at:

DWR\_IRWM@water.ca.gov

# Integrated Regional Water Management

## What is IRWM?

Integrated Regional Water Management (IRWM) is a collaborative effort to manage all aspects of water resources in a region. IRWM differs from traditional approaches to water resource management by integrating all facets of water supply, water quality, waste water treatment, and flood and storm water management.

IRWM crosses jurisdictional, watershed, and political boundaries; involves multiple agencies, stakeholders, individuals, and groups; and attempts to address the issues and differing perspectives

of all the entities involved through mutually beneficial solutions.

IRWM is an example of integrated resource planning, which began in the late 1980s in the electric power industry as a comprehensive approach to resource management and planning. When applied to water management, integrated resource planning is a systems approach that explores the cause-and-effect relationships between different aspects of water resource management, with an understanding that changes in the management of one aspect of water re-

sources can affect others. Because water resources are often not confined to the boundaries of a single water management agency, a consensus-based, cross-jurisdictional, regional approach provides an opportunity to formulate comprehensive solutions to water resource issues within a region.

The methods used in the IRWM include a range of water resource management strategies, which relate to water supply, water quality, water use efficiency, operational flexibility, and stewardship of land and natural resources. ☞

## Background

Although IRWM planning has roots in integrated resource planning, recent developments have caused a surge in IRWM activity in California.

The Integrated Regional Water Management Act of 2002 (Senate Bill 1672, Costa) amended the California Water Code (CWC) to add §10530 to encourage local agencies to work cooperatively to manage local and imported water supplies to improve the quality, quantity, and reliability of those supplies. While this act provided the authority for IRWM plans, it gave little guidance or incentive for IRWM planning or implementation.

In November 2002, California voters passed Proposition 50, the Water Security, Clean Drinking Water, Coastal and Beach Protection Act of 2002, which provided \$500,000,000 (CWC §79560-79565) to fund competitive grants for projects consistent with an adopted IRWM plan. The grant program was run as a joint effort between the Department of Water Resources (DWR) and the State Water Resources Control Board to provide both planning and implementation grants to IRWM efforts.

The incentive provided by this funding, as well as the direction provided in grant program guidelines, were major drivers for progress in IRWM over the last several years.

In December 2005, DWR released the California Water Plan (CWP) Update, 2005, which names the IRWM as a key initiative to ensure reliable water supplies.

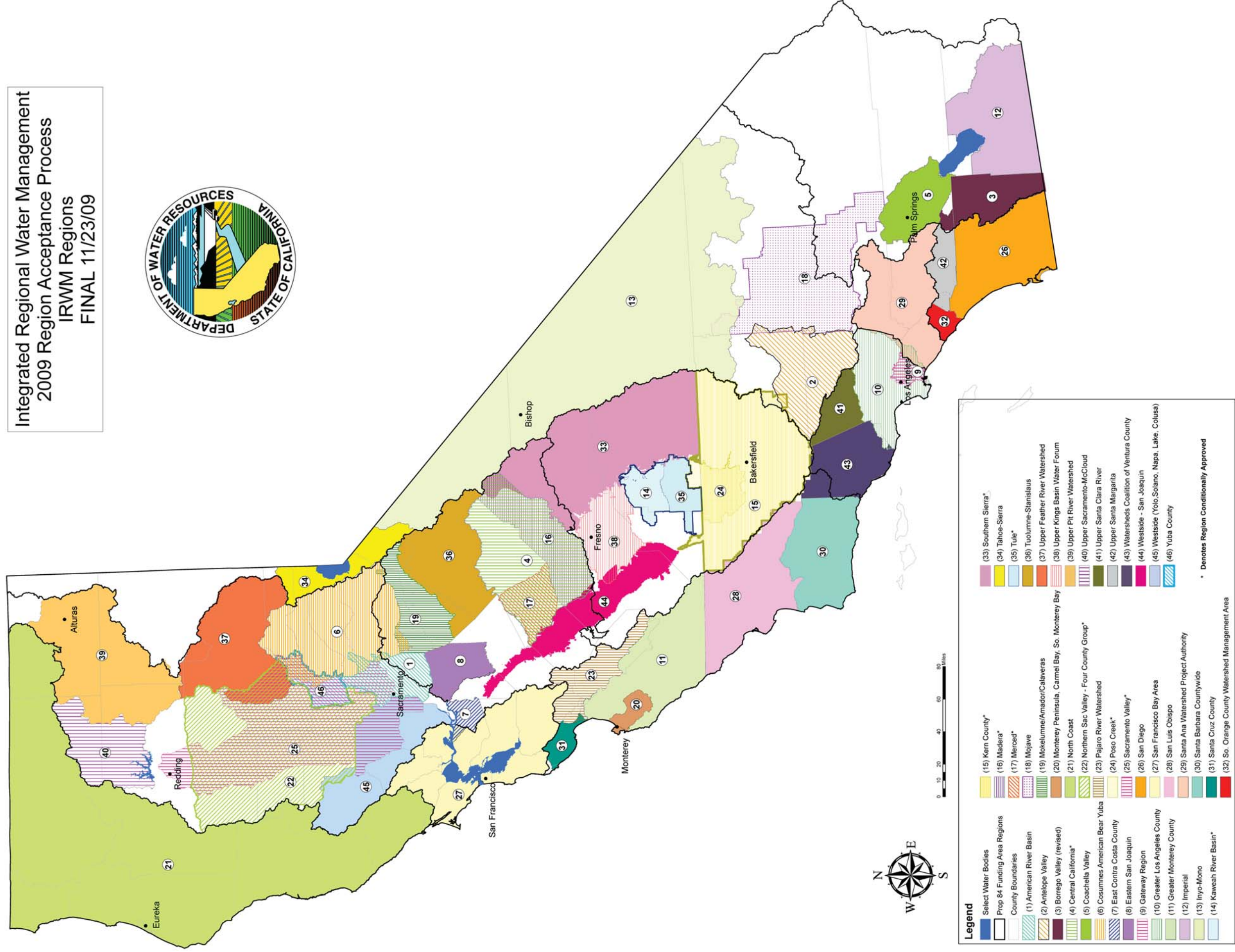
In November 2006, California voters passed Proposition 84, the Safe Drinking Water, Water Quality, and Supply, Flood Control, River and Coastal Protection Bond Act of 2006. Proposition 84 provides \$1,000,000,000 for IRWM planning and implementation. At the same time, California voters also passed Proposition 1E, the Disaster Preparedness and Flood Prevention Bond Act of 2006, which provides, among other actions, \$300,000,000 for storm water projects that reduce flood damage and are consistent with an IRWM plan.

In October 2009, DWR released the CWP Pre-Final Draft, Update 2009, which emphasizes the need for integrated regional water management. As stated in the Highlights volume, "IRWM provides a critical framework for actions to address the un-



certainties presented by climate change as well as other risks to California's water future." The first objective in the implementation chapter (Volume 1, Chapter 7) is to promote, improve, and expand integrated regional water management. ☞

Integrated Regional Water Management  
2009 Region Acceptance Process  
IRWM Regions  
FINAL 11/23/09



**Legend**

- Select Water Bodies
- Prop 84 Funding Area Regions
- County Boundaries
- American River Basin
- Antelope Valley
- Borrego Valley (revised)
- Central California\*
- Coachella Valley
- Cosumnes American Bear Yuba
- East Contra Costa County
- Eastern San Joaquin
- Gateway Region
- Greater Los Angeles County
- Greater Monterey County
- Imperial
- Inyo-Mono
- Kaweah River Basin\*
- Kern County\*
- Madera\*
- Merced\*
- Mojave
- Mokelumne/Amador/Calaveras
- Monterey Peninsula, Carmel Bay, So. Monterey Bay
- North Coast
- Northern Sac Valley - Four County Group\*
- Pajaro River Watershed
- Poso Creek\*
- Sacramento Valley\*
- San Diego
- San Francisco Bay Area
- San Luis Obispo
- Santa Ana Watershed Project Authority
- Santa Barbara Countywide
- Santa Cruz County
- So. Orange County Watershed Management Area
- Southern Sierra\*
- Tahoe-Sierra
- Tule\*
- Tuolumne-Stanislaus
- Upper Feather River Watershed
- Upper Kings Basin Water Forum
- Upper Pitt River Watershed
- Upper Sacramento-McCloud
- Upper Santa Clara River
- Upper Santa Margarita
- Watersheds Coalition of Ventura County
- Westside - San Joaquin
- Westside (Yolo, Solano, Napa, Lake, Colusa)
- Yuba County

\* Denotes Region Conditionally Approved

Notes:  
 1) Hatch and Dot symbols are shown where there is a boundary overlap  
 2) Numbers shown are for reference purposes only and correspond to internal DWR RAP submittal identifications.  
 3) Region boundaries shown are those proposed by each applicant as submitted to DWR for the 2009 RAP on April 29, 2009, or as revised and submitted to DWR following the 2009 RAP interview (as of October 22, 2009)

**Resources**

- California Water Plan and Updates: <http://www.waterplan.water.ca.gov/>
- IRWM Grant Program: <http://www.water.ca.gov/irwm/>
- FloodSAFE: <http://www.floodsafe.water.ca.gov/>
- Other DWR Grant programs: <http://www.water.ca.gov/nav/nav.cfm?loc=t&id=103>
- State Water Board Financial Assistance: [http://www.waterboards.ca.gov/water\\_issues/programs/grants\\_loans](http://www.waterboards.ca.gov/water_issues/programs/grants_loans)

**Region Acceptance Process**

In 2009, DWR went through a Region Acceptance Process (RAP) to accept regions into the IRWM Grant Program. Forty six regions submitted applications, and after a thorough review and interview process, DWR approved 36 regions, and conditionally approved 10 other regions. The map above shows those regions that have been approved or conditionally approved by DWR. The DWR IRWM web site contains more specific information on the RAP.